



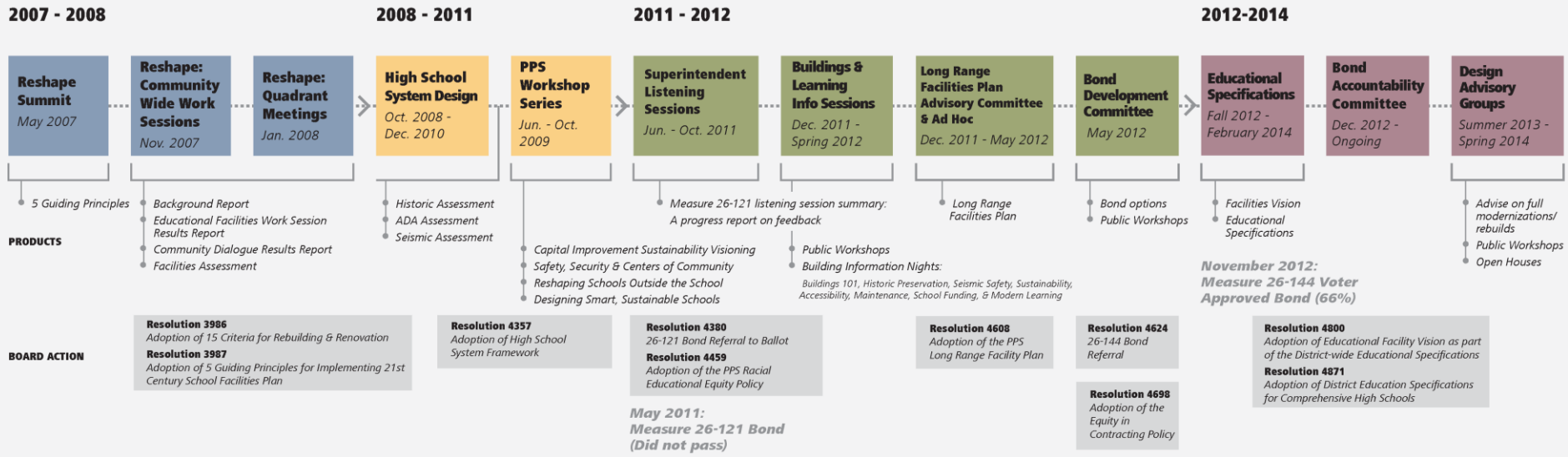
# ROOSEVELT SCHEMATIC DESIGN WORKSHOP #2

## Closing the Loop

### How did we get here today?



### PPS FACILITIES PLANNING - PUBLIC PROCESS



# 2007 - 2008

**Reshape Summit**  
*May 2007*

**Reshape: Community Wide Work Sessions**  
*Nov. 2007*

**Reshape: Quadrant Meetings**  
*Jan. 2008*



## PRODUCTS

- *5 Guiding Principles*
- *Background Report*
- *Educational Facilities Work Session Results Report*
- *Community Dialogue Results Report*
- *Facilities Assessment*

## BOARD ACTION

**Resolution 3986**  
*Adoption of 15 Criteria for Rebuilding & Renovation*

**Resolution 3987**  
*Adoption of 5 Guiding Principles for Implementing 21st Century School Facilities Plan*

# 2008 - 2011

**High School System Design**  
*Oct. 2008 - Dec. 2010*

- *Historic Assessment*
- *ADA Assessment*
- *Seismic Assessment*

**Resolution 4357**  
*Adoption of High School System Framework*

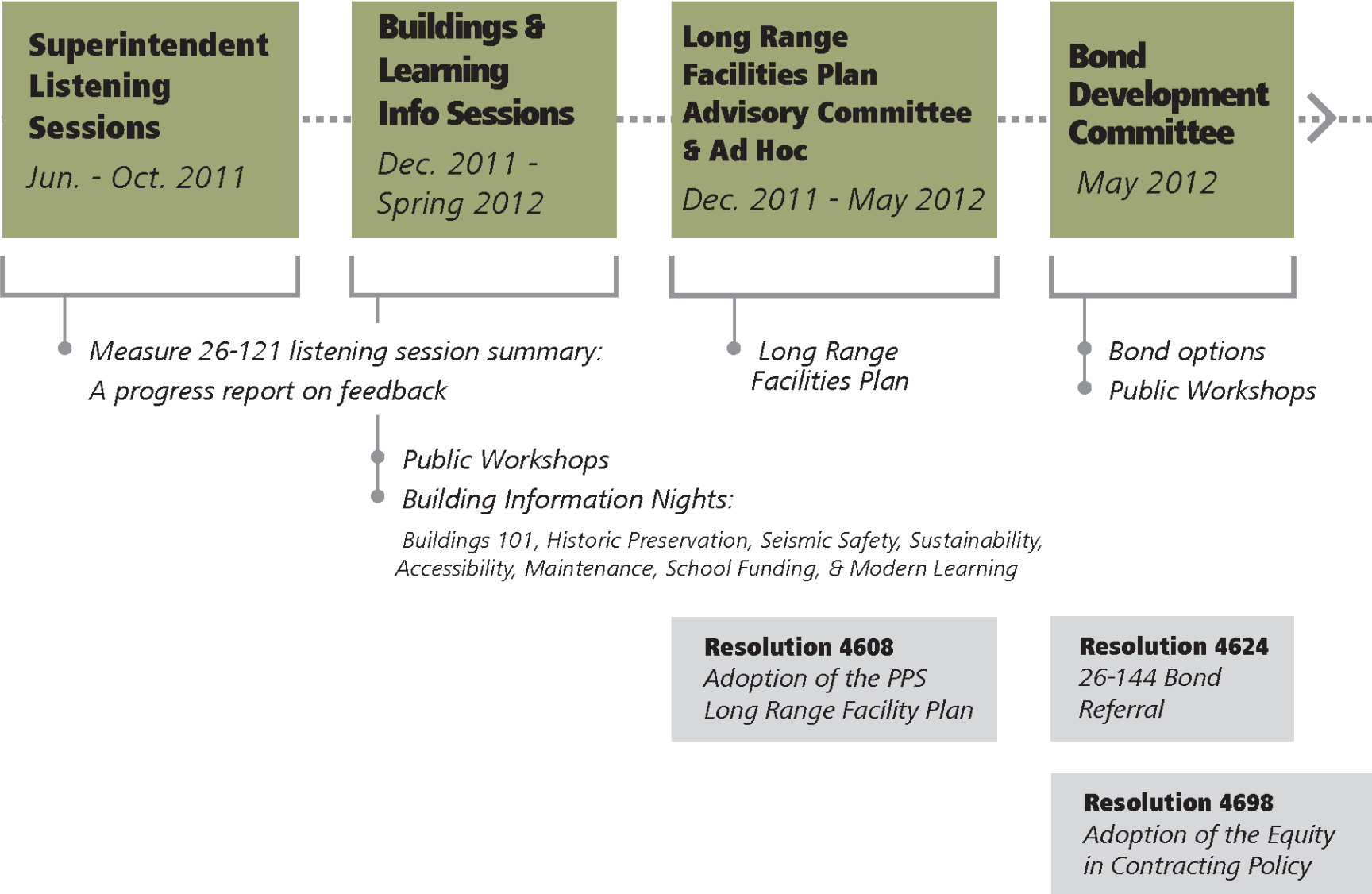
**PPS Workshop Series**  
*Jun. - Oct. 2009*

- *Capital Improvement Sustainability Visioning*
- *Safety, Security & Centers of Community*
- *Reshaping Schools Outside the School*
- *Designing Smart, Sustainable Schools*

**Resolution 4380**  
*26-121 Bond Referral to Ballot*  
**Resolution 4459**  
*Adoption of the PPS Racial Educational Equity Policy*

**May 2011:**  
**Measure 26-121 Bond**  
**(Did not pass)**

# 2011 - 2012



# 2012-2014

## Educational Specifications

Fall 2012 -  
February 2014

- Facilities Vision
- Educational Specifications

**November 2012:**  
**Measure 26-144 Voter**  
**Approved Bond (66%)**

### **Resolution 4800**

*Adoption of Educational Facility Vision as part of the District-wide Educational Specifications*

### **Resolution 4871**

*Adoption of District Education Specifications for Comprehensive High Schools*

## Bond Accountability Committee

Dec. 2012 -  
Ongoing

## Design Advisory Groups

Summer 2013 -  
Spring 2014

- Advise on full modernizations/rebuilds
- Public Workshops
- Open Houses

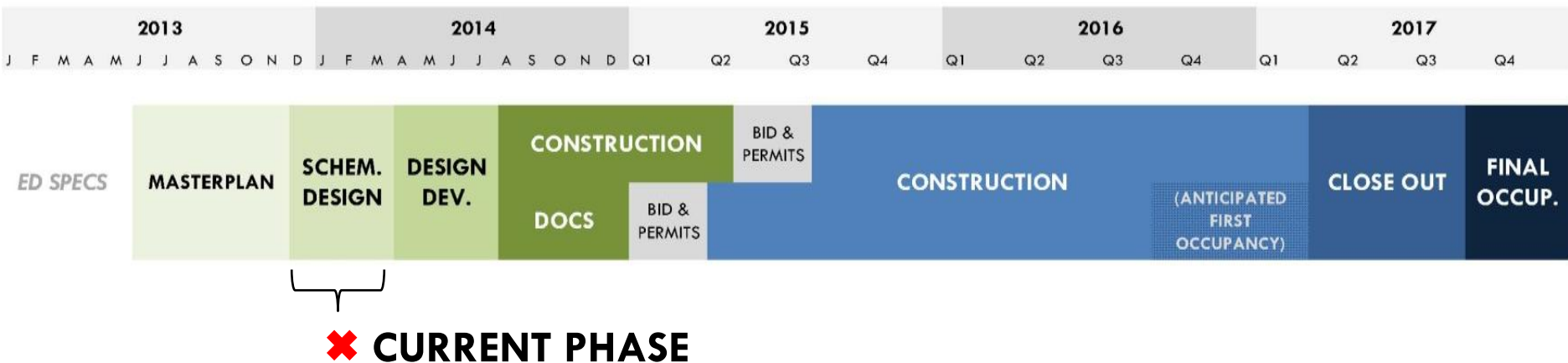


# ROOSEVELT SCHEMATIC DESIGN WORKSHOP #2

## Closing the Loop

### Where are we now?

#### ROOSEVELT DESIGN & CONSTRUCTION SCHEDULE





# Roosevelt Project Communications

# OUTREACH & ENGAGEMENT

Spring, 2014





**Get Involved**

**Make Your Voice Heard**

Roosevelt High School is updating the schematic design of the layout of educational areas. Come join our design team!

**Roosevelt High School Public Design Workshop**  
**Saturday March 15th 9:00 a.m.**  
 George Middle School Cafeteria,  
 10000 N. Burr Ave. Portland

**Free Breakfast at 9:00 a.m.**  
 Free childcare provided and translation available in Spanish and Somali.

**SCHOOL BUILDING IMPROVEMENT BOND: ROOSEVELT**  
<http://Rooseveltbond.pps.net> • Phone: 503-916-2222 • Join our mailing list: [RHSMod@pps.net](mailto:RHSMod@pps.net)

**Ka Qeybgal**

**CODKAAGA KA DHIDHID LA MAQAANO**

Dib-u-cusbooneysiintii Dugsiga Sare P waxay u gudubtay heerka nashqadeyi dheeraad oo ku aadan khariidada gac waxbarashada iyo meelaha ardeyda v Kaalay oo talo qiimo leh ku biiri kooxda.

**Kulan-Hawleedka Dadweynal Naqshada Dugsiga Sare Roosevelt**  
**Sabti Maarso 15ka 9:00 subaxnimo.** ilaa  
 Makhaayada Dugsiga Dhexe George,  
 10000 N. Burr Ave. Portland

**Quraac Bilaash ah 9:00 subaxii.**  
 Xarmano caruurta oo bilaash ah iyo turjubaan Soomaali waas kuu diyaar.

**Ka Caawii Habeynta Muhiim**

**SCHOOL BUILDING IMPROVEMENT BOND: ROOSEVELT**  
<http://Rooseveltbond.pps.net> • Phone: 503-916-2222 • Join our mailing list: [RHSMod@pps.net](mailto:RHSMod@pps.net)

**Comprométase**

**HAGA QUE SU VOZ SEA ESCUCHADA**

¡La Modernización de la Escuela Preparatoria de Roosevelt se cambia a un diseño esquemático – un estudio más detallado del plano de los espacios educativos y las áreas comunes. Venga a proveer comentarios valiosos al equipo de diseño!

**Taller #2 Diseño Público de La Escuela Preparatoria Roosevelt**  
**Sábado 15 de marzo de 9:00 a.m. a Medio Día,**  
 en la cafetería de la Escuela Media de George  
 10000 N Burr Ave. Portland

**Desayuno Gratis a las 9:00 a.m.**  
 Cuidado de niños gratis y traducción disponible de Español y Somali.

**Ayude a darle forma a su futura escuela.**

**BONO PARA LAS MEJORIAS DE LA ESCUELA ROOSEVELT**  
<http://Rooseveltbond.pps.net> • Teléfono: 503-916-2222 • Únase a nuestra lista de correo: [RHSMod@pps.net](mailto:RHSMod@pps.net) • [www.facebook.com/pps.bond](http://www.facebook.com/pps.bond)

- Multiple language Posters & flyers at Roosevelt & Feeder schools students
- Flyers placed in St. Johns & Kenton neighborhoods
- Notices backpacked home to Roosevelt & Feeder School families

**SCHOOL BUILDING IMPROVEMENT BOND: ROOSEVELT**  
<http://Rooseveltbond.pps.net> • Phone: 503-916-2222 • Join our mailing list: [RHSMod@pps.net](mailto:RHSMod@pps.net) • [www.facebook.com/pps.bond](http://www.facebook.com/pps.bond) • [@ppsbond](https://twitter.com/ppsbond)



## OUTREACH THROUGH

- Community events
- Community meetings
- Business Associations
- Neighborhood Associations
- Roosevelt & Feeder Schools – Back To School Events, PTA Meetings
- One on One meetings with key community members





<http://www.pps.k12.or.us/bond/>

<http://RooseveltBond.pps.net>

- Bond
- Bond Timelines
- Community oversight
- Community involvement
- Long Range Facilities Plan
- Doing business with PPS
- News & Media
- Seismic
- Summer Projects
- Accessibility
- Roof replacement
- Faubion
- Franklin
- Roosevelt
- Grant
- Public Design Workshops
- Interactive map

PPS Home > Bond

### School Building Improvement Bond



Work has begun on the voter approved eight-year, School Building Improvement Bond. The bond will rebuild three high schools and replace one grade school. It will also fix leaking and deteriorating roofs, and make seismic safety, access and science classroom upgrades at up to 63 other schools.

For the summer of 2014 a new group of twelve schools from across the district will receive improvement projects. In 2013 work at six schools were completed on time and on budget employing hundreds of workers from local companies.

Master planning for the full modernization of the historic Franklin and Roosevelt high schools and the replacement of Faubion PK-8 is underway and we are seeking your input at a series of upcoming Public Design Workshops.

Read the original bond proposal: [English](#) | [中文](#) | [Русский](#) | [Soomaaliga](#) | [Español](#) | [Tiếng Việt](#)

#### Get Involved

PPS is building futures and we need your help. Attend an upcoming Public Design Workshop or Design Advisory Group (DAG) meeting.

**Rebuilding Roosevelt Schematic Design Workshop #2**  
Saturday Mar. 15th 9:00a.m. to Noon Location : George Middle School 10000 N. Burr Ave. Portland.

#### Accountability

The Bond Accountability Committee communicates key information related to the bond to the School Board, public groups, organizations and stakeholders. [Learn more](#)

#### Stay informed

[Read the Roosevelt schematic design workshop #1 summary here.](#)

[View the Faubion Master Plan Presentation](#)

Summer 2014 improvement projects have been announced. [Visit the 2014 summer project webpage for more information.](#)

Important information about the [summer closure of the Creston Children's Dental Clinic.](#)

[View 10 Things To Know About The Roosevelt Master Plan](#)

#### Get Connected

For more information about any school building improvement bond projects email [schoolmodernization@pps.net](mailto:schoolmodernization@pps.net)

Follow us on Social Media

**PPS Social Media links** [f](#) [t](#) [b](#) [t](#)

Or call us at 503-916-2222

To receive project specific updates and events notices. [Join the Franklin project mailing list.](#) [RHSMod@pps.net](mailto:RHSMod@pps.net)

[Join the Roosevelt Rebuild Newsletter mailing list here.](#)

- Bond
- Bond Timelines
- Community oversight
- Community involvement
- Long Range Facilities Plan
- Doing business with PPS
- News & Media
- Seismic
- Summer Projects
- Accessibility
- Roof replacement
- Faubion
- Franklin
- Roosevelt
- Grant
- Public Design Workshops
- Interactive map

PPS Home > Bond > Roosevelt



A cornerstone of the St. John's and North Portland communities, Roosevelt High School is one of three high schools that will be modernized as part of the school building improvement bond. Roosevelt's modernization will completely reconfigure and update learning spaces with a focus on indoor environmental quality, sustainability and historic rehabilitation. Got questions? Check out the [Roosevelt Modernization FAQ's](#). Learn more about Roosevelt High [here](#).

[View 10 Things To Know About The Roosevelt Master Plan](#)

**Roosevelt Schematic Design Workshop #2 Saturday, March, 15, 9:00a.m. - Noon Location: George Middle School 10000 N. Burr Ave.**

[Read the Roosevelt schematic design workshop #1 summary here.](#)

#### Get Involved

**Roosevelt Schematic Design Workshop #2** is scheduled for Saturday, March 15th, 9:00am-Noon Location George Middle School Cafeteria, 10000 N. Burr Ave. Portland.

Public Design Workshops are an important part of Portland Public Schools commitment to community ownership of the School Building Improvement Bond work. These design workshops will provide interested citizens, students and school families the opportunity to help shape the master plan for Roosevelt High School.

#### Stay Informed

[Read the Roosevelt Schematic Design Workshop #1 summary here.](#)

Check out the latest Roosevelt Project Director's Newsletter here.

[Roosevelt Project Director's Newsletter #4 Nov 27](#)

[Roosevelt Project Director's Newsletter #3 Nov 13](#) In [Español](#) [Soomaaliga](#)

[Roosevelt Project Director's Newsletter #2 Nov 6](#) In [Español](#)

[Roosevelt Project Director's Newsletter #1 Oct 30](#) In [Español](#)

#### Get Connected

To receive updates and event notices, [join the Roosevelt Project Director's Newsletter mailing list here.](#)

email : [RHSMod@pps.net](mailto:RHSMod@pps.net)

Phone: 503-916-2222

**PPS Social Media links** [f](#) [t](#) [b](#) [t](#)

Roosevelt High School [web site](#)

For more general information about school building improvement bond projects [email the Office of School Modernization.](#)

- Robust Main Bond & Roosevelt Bond Web pages
- PPS Facebook & Twitter Sites
- Bond Facebook & Twitter sites
- Community newspaper ads and notices
- Free media stories
- Autodialer calls to Roosevelt & Feeder School families



[www.facebook.com/pps.bond](http://www.facebook.com/pps.bond)



[@ppsbond](https://twitter.com/ppsbond)

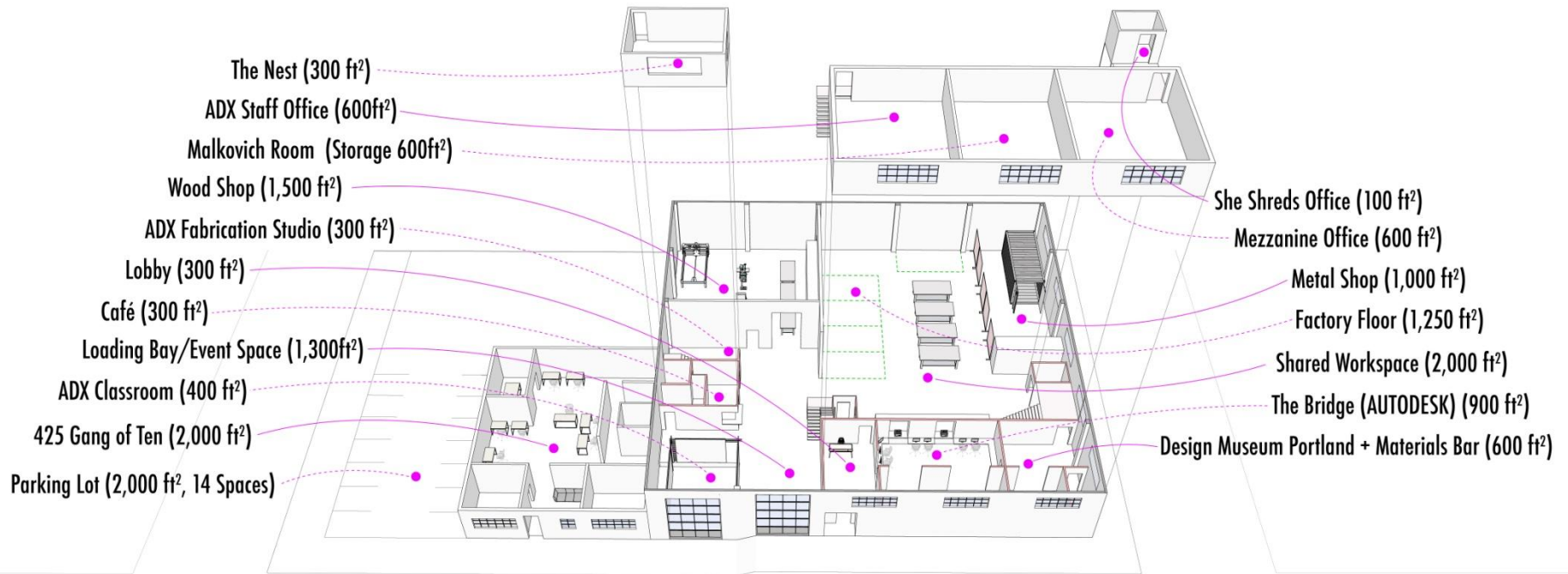
[RHSMod@pps.net](mailto:RHSMod@pps.net)

503-916-2222



# ROOSEVELT SCHEMATIC DESIGN WORKSHOP #2

## Closing the Loop



SE 11th Avenue

SE Stark Street

north

SE Oak Street

# PORTLAND PUBLIC SCHOOLS

## Community Meeting - Roosevelt High School

March 15, 2014

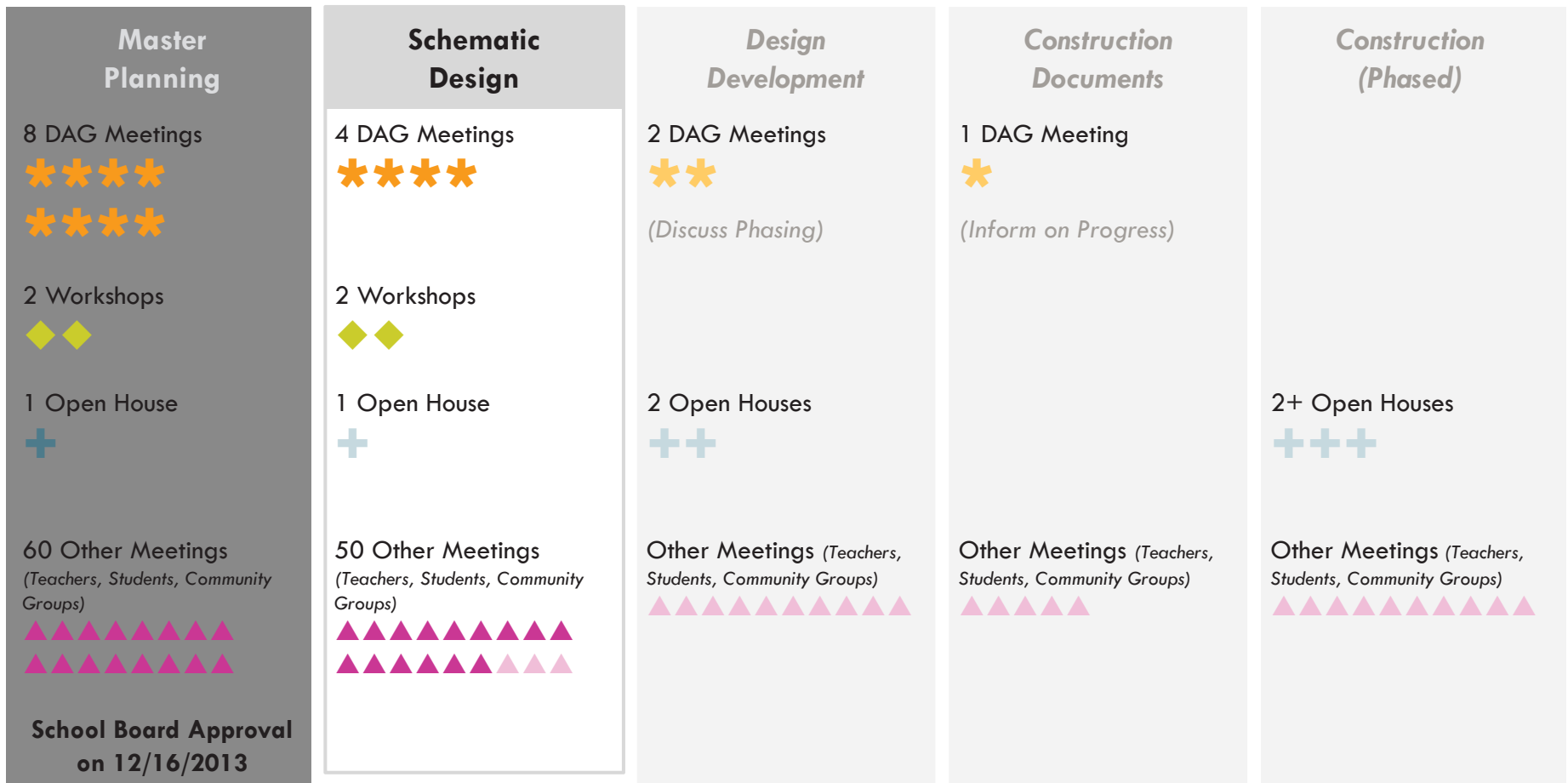




# ROOSEVELT SCHEMATIC DESIGN WORKSHOP #2

## Closing the Loop

### ROOSEVELT COMMUNITY DESIGN PROCESS





# ROOSEVELT SCHEMATIC DESIGN WORKSHOP #2

Closing the Loop

## DAG MEETINGS \*

### PRE-DESIGN & MASTER PLANNING

#### 8 DAG Meetings

- \* June 13, 2013 - RHS DAG Meeting #1
- \* July 11, 2013 – RHS DAG Meeting #2
- \* August 22, 2013 – RHS DAG Meeting #3
- \* September 4, 2013 – RHS DAG Meeting #4
- \* September 19, 2013 – RHS DAG Meeting #5
- \* October 3, 2013 – RHS DAG Meeting #6
- \* October 17, 2013 – RHS DAG Meeting #7
- \* November 6, 2013 – RHS DAG Meeting #8

### SCHEMATIC DESIGN

#### 4 DAG Meetings

- \* January 16, 2014 – RHS DAG Meeting #9
- \* January 30, 2014 – RHS DAG Meeting #10
- \* February 13, 2014 – RHS DAG Meeting #11
- \* February 27, 2014 – RHS DAG Meeting #12



# ROOSEVELT SCHEMATIC DESIGN WORKSHOP #2

Closing the Loop

## PUBLIC WORKSHOPS ◆ & OPEN HOUSES +

### PRE-DESIGN & MASTER PLANNING

2 Workshops

- ◆ September 21, 2013 – RHS MP Workshop #1
- ◆ October 19, 2013 – RHS MP Workshop #2

1 Open House

- + November 19, 2013 – RHS MP Open House

### SCHEMATIC DESIGN

2 Workshops

- ◆ February 22, 2014 – RHS SD Workshop #1
- ◆ March 15, 2014 – RHS SD Workshop #2

1 Open House

- + April 3, 2013 – RHS SD Open House



# ROOSEVELT SCHEMATIC DESIGN WORKSHOP #2

## Closing the Loop



### OTHER STAKEHOLDER MEETINGS ▲ - RHS ADMINISTRATION

#### PRE-DESIGN & MASTER PLANNING

##### 9+ Administration Meetings

- ▲ May 13, 2013 – Facilities walkthrough
- ▲ June 25, 2013 – Meeting w/ Roosevelt Admin
- ▲ September 11, 2013 – Admin Update
- ▲ September – January 2013 - Wednesday AM Calls w/ Vice Principal
- ▲ October 9, 2013 – Prep for Staff Meeting
- ▲ November 6, 2013 – Pre-DAG Check-In
- ▲ December 2, 2013 – Enhanced Elective Review
- ▲ December 13 – RHS Curriculum Scheduling
- ▲ December 9, 2013 – Prep for Teacher Meeting

#### SCHEMATIC DESIGN

##### 9 Administration

- ▲ January 16, 2014 – RHS Curriculum Scheduling
- ▲ January 21, 2014 – Admin Update
- ▲ February 4, 2014 – Admin Update
- ▲ February 11, 2014 – Admin Update
- ▲ February 18, 2014 – Admin Update
- ▲ February 21, 2014 – Planning Meeting
- ▲ February 25, 2014 – Admin Update
- ▲ February 27, 2014 – Admin Update
- ▲ March 4, 2014 – Admin Update





# ROOSEVELT SCHEMATIC DESIGN WORKSHOP #2

## Closing the Loop



### OTHER STAKEHOLDER MEETINGS ▲ - TEACHERS

#### PRE-DESIGN & MASTER PLANNING

##### 7 Teacher Meetings

- ▲ October 10, 2013 – RHS Staff Meeting
- ▲ October 16, 2013 – Briefings at Teacher Staff Mtgs.
- ▲ December 4, 2013 – Master Planning Meeting #1
- ▲ December 9, 2013 – Master Planning Meeting #2
- ▲ December 12, 2013 – Project Manager Teacher Office Hours @ RHS
- ▲ December 11, 2013 – Master Planning Meeting #3
- ▲ December 19, 2013 – Master Planning Meeting #4

#### SCHEMATIC DESIGN

##### 7 Teacher Meetings

- ▲ February 14, 2014 – Theater Meeting
- ▲ February 19, 2014 – Athletics Department
- ▲ February 21, 2014 – Writing / Publishing Center
- ▲ February 26, 2014 – College Partnership Center
- ▲ February 26, 2014 – Counseling Department
- ▲ February 26, 2014 – Athletics Department #2
- ▲ March 7, 2014 – Central Admin



# ROOSEVELT SCHEMATIC DESIGN WORKSHOP #2

Closing the Loop



## OTHER STAKEHOLDER MEETINGS ▲ - PPS FACILITIES TEAMS

### PRE-DESIGN & MASTER PLANNING

#### 7 Internal Facilities Team Meetings

- ▲ September 18, 2013 – RHS/FHS Sustainability Mtg.
- ▲ October 8, 2013 – Transportation
- ▲ October 8, 2013 – Nutrition Services
- ▲ October 10, 2013 – IT / Maintenance / Proj. Mgmt.
- ▲ October 14, 2013 – RHS Sustainability Workshop
- ▲ October 25, 2013 – Stormwater / Landscape
- ▲ November 7, 2013 – RHS Project Update #1

### SCHEMATIC DESIGN

#### 7 Internal Facilities Team Meetings

- ▲ January 30, 2014 – RHS Project Update #2
- ▲ February 14, 2014 – Security & Access Control
- ▲ February 18, 2014 – Nutrition Services
- ▲ February 20, 2014 – Maintenance & Facilities
- ▲ February 21, 2014 – IT / Library / Multimedia
- ▲ February 25, 2014 – Transportation & Grounds
- ▲ February 27, 2014 – RHS Project Update #3



# ROOSEVELT SCHEMATIC DESIGN WORKSHOP #2

## Closing the Loop



### OTHER STAKEHOLDER MEETINGS ▲ - COMMUNITY STAKEHOLDERS

#### PRE-DESIGN & MASTER PLANNING

##### 11 Community Stakeholder Meetings

- ▲ June 12, 2013 – Meeting w/ Student & Advisor from Momentum Alliance
- ▲ August 28, 2013 – RHS Family BBQ
- ▲ September 3, 2013 – The Gathering
- ▲ September 4, 2013 – Meeting w/ RCIC
- ▲ September 7, 2013 – St. John's Farmers Market
- ▲ September 10, 2013 – Meeting North Portland Business Association at UP
- ▲ September 18, 2013 – RHS Back to School Night
- ▲ September 26, 2013 – RHS Alumni Dinner
- ▲ October 10, 2013 – RHS vs. FHS Football Game
- ▲ October 16, 2013 – PTSA Meeting
- ▲ December 3, 2013 - The Gathering

#### SCHEMATIC DESIGN

##### 11 Community Stakeholder Meetings

- ▲ January 6, 2013 – N. Portland Nghbd. Services
- ▲ January 13, 2013 – St. John's Neighborhood Ass.
- ▲ January 17, 2013 – Oregon Food Bank / Pantry
- ▲ January 21, 2013 – RHS Partners Meeting
- ▲ January 25, 2014 – N. Portland-St. John's Winter Social
- ▲ January 27, 2014 – University Park Nghbd. Ass.
- ▲ January 28, 2014 – 8th Grade Info Night
- ▲ January 29, 2014 – Coffee w/ Dennis Phillips
- ▲ February 18, 2014 – RHS Partners Meeting
- ▲ February 20, 2014 – Meeting w/ RHS Alumni
- ▲ March 1, 2014 – Latino Parent / Student Conf



# ROOSEVELT SCHEMATIC DESIGN WORKSHOP #2

Closing the Loop

## OTHER STAKEHOLDER MEETINGS ▲ - STUDENTS

### PRE-DESIGN & MASTER PLANNING

2 Student Meetings

- ▲ October 8, 2013 – After-School Student Meeting
- ▲ October 23, 2013 – Master Planning Classroom Workshops

### SCHEMATIC DESIGN

TBD Student Meeting(s)

- ▲ TBD – Schematic Design Classroom Workshops



# ROOSEVELT SCHEMATIC DESIGN WORKSHOP #2

## Closing the Loop



### OTHER STAKEHOLDER MEETINGS ▲ - CHECK-INS

#### PRE-DESIGN & MASTER PLANNING

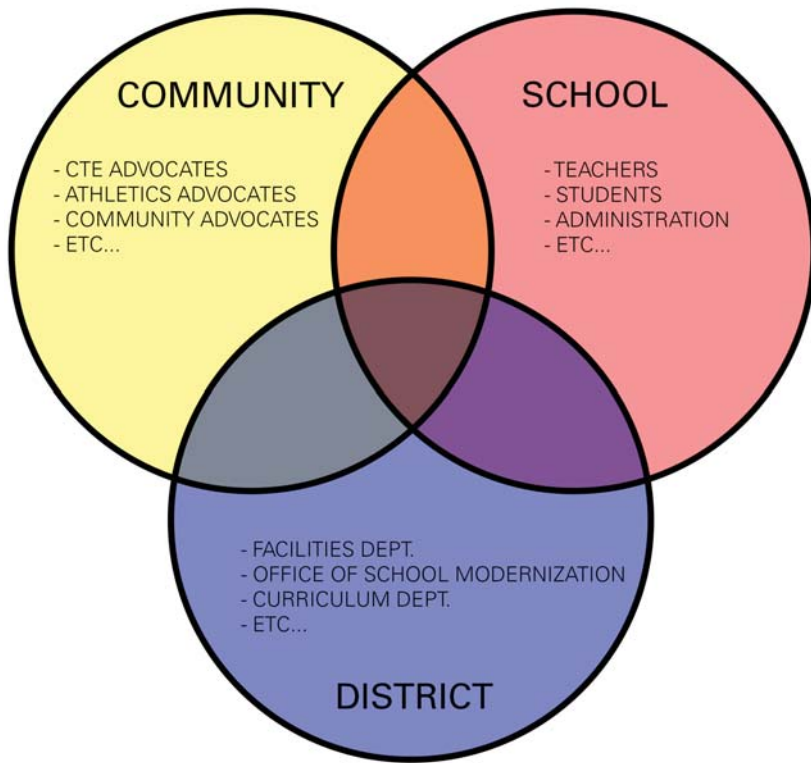
#### 23 Community Check-Ins

- ▲ September 4, 2013 – Sitton Junta de Padre
- ▲ September 8, 2013 – Our Portland, Our Schools
- ▲ September 13, 2013 – James John BBQ
- ▲ September 17, 2013 – St. John's Boosters
- ▲ September 13, 2013 – Sitton PTA Meeting
- ▲ September 13, 2013 – Peninsula Back to School Night
- ▲ September 13, 2013 – Chavez Back to School Night
- ▲ September 26, 2013 – Rosa Parks Back to School Night
- ▲ September 26, 2013 – Sitton PTA Meeting
- ▲ October 15, 2013 – St. John's Boosters
- ▲ October 16, 2013 – Sitton PTA Meeting
- ▲ November 5, 2013 – Community Coffee w/ RHS Principal
- ▲ November 5, 2013 – RHS Partners Meeting
- ▲ November 6, 2013 - Sitton Junta de Padre
- ▲ November 7, 2013 – Kenton Business Association
- ▲ November 18, 2013 – St. John's Neighborhood Association
- ▲ November 19, 2013 – RHS Partners Meeting
- ▲ November 19, 2013 – St. John's Booster
- ▲ November 20, 2013 – RHS PTA Meeting
- ▲ December 3, 2013 – Community Coffee w/ RHS Principal
- ▲ December 17, 2013 – RHS Partners Meeting
- ▲ December 17, 2013 – St. John's Booster
- ▲ December 18, 2013 – RHS PTA Meeting

#### SCHEMATIC DESIGN

#### 16 Community Check-Ins

- ▲ January 7, 2014 - Community Coffee w/ RHS Principal
- ▲ January 7, 2014 - RHS Partners Meeting
- ▲ January 13, 2014- St. Johns Neighborhood Association
- ▲ January 15, 2014 - RHS PTA Meeting
- ▲ January 15, 2014 - Sitton PTA Meeting
- ▲ January 21, 2014 - St. John's Boosters
- ▲ January 22, 2014 - North Portland PSAC Meeting
- ▲ January 29, 2014 - Sitton Open House
- ▲ January 29, 2014 - Chavez Open House
- ▲ January 30, 2014 – James John Open House
- ▲ January 31, 2014- Cesar Chavez Community Coffee
- ▲ February 4, 2014 - Community Coffee w/ RHS Principal
- ▲ February 4, 2014 - RHS Partners Meeting
- ▲ February 19, 2014 – RHS PTA
- ▲ March 4, 2014- Community Coffee w/ RHS Principal
- ▲ March 4, 2014 - RHS Partners Mtg



A consolidation of district and community guiding principals, overarching goals, and visioning process translated into architecture design themes

**Learning Focused**

**Personalized**

**Flexible and Adaptable**

**Honor Community**

**Safe and Secure**

**Sustainable**

**Respecting History and Context**





# ROOSEVELT SCHEMATIC DESIGN WORKSHOP #2

## What We've Learned to Date

### LEARNING FOCUSED

- There are competing desires for space within the building and we must find the balance. These spaces include:
  - Athletics
  - Fine and Performing Arts
  - Career Related Learning and CTE programs
  - 21<sup>st</sup> Century learning spaces
  - Classroom Spaces
  - Community Services
- 21st Century learning is desired by all, but there are those who wish to balance this with traditional classroom designs and teacher/classroom relationships. We recognize the need for a balance and will continue to pursue this as the design develops.



# ROOSEVELT SCHEMATIC DESIGN WORKSHOP #2

## What We've Learned to Date

### **PERSONALIZED**

- Treasured parts of the school (like the murals) need to be retained
- Environments need to be welcoming, calm and inviting to students and the community

### **FLEXIBLE AND ADAPTABLE**

- All spaces of the building and site need to be accessible to all
- Provide better access to services like restrooms and water fountains
- Bathrooms should be clean and accessible
- Interior circulation needs to be improved





# ROOSEVELT SCHEMATIC DESIGN WORKSHOP #2

## What We've Learned to Date

### **HONOR COMMUNITY**

- Community would like to have access to the following areas after school hours:
  - Health Clinic and teen parenting
  - Athletic facilities including weight room and aerobics studio
  - Maker Space
  - Theater
- Career Related Learning Programs have been identified based on RHS community desires

### **SAFE AND SECURE**

- Seismic upgrades to meet code are required throughout
- Security needs to be improved by limiting number of entrances/exits and allow students to get to class without going outside



# ROOSEVELT SCHEMATIC DESIGN WORKSHOP #2

## What We've Learned to Date

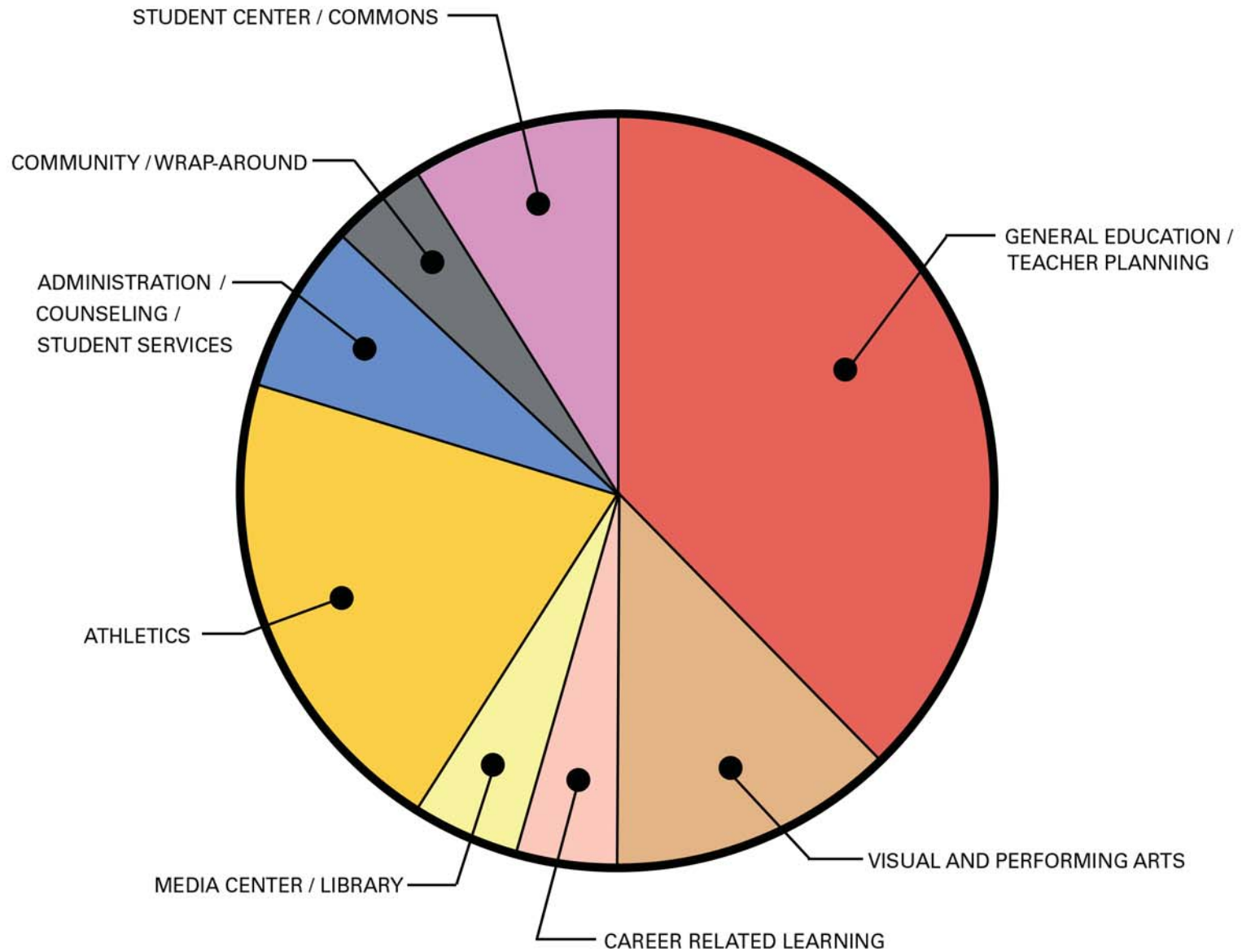
### **SUSTAINABLE**

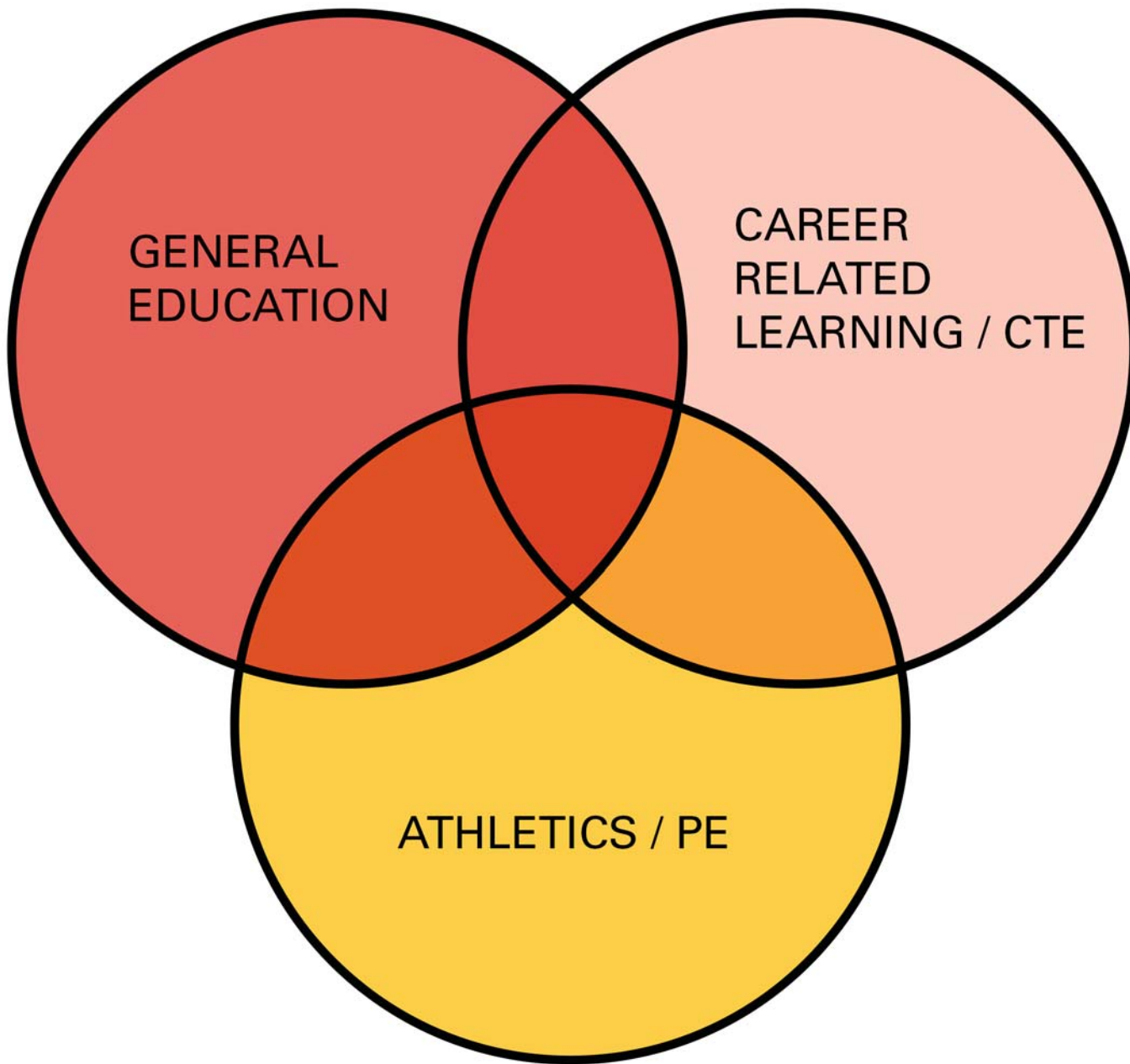
- Natural light and ventilation are important to design
- Existing Neighborhood Garden needs to be retained
- Existing windows have character
- Staff and community are divided on desires for vehicular parking vs. open space and other site program needs
- Covered bike parking is important

### **RESPECTING HISTORY AND CONTEXT**

- Historic Memorials and Memorabilia need to be incorporated into new program
- Heritage memorabilia should be distributed throughout the school or at least made more visible to more students

# ROOSEVELT HS - 1350 STUDENTS / 1700 CORE

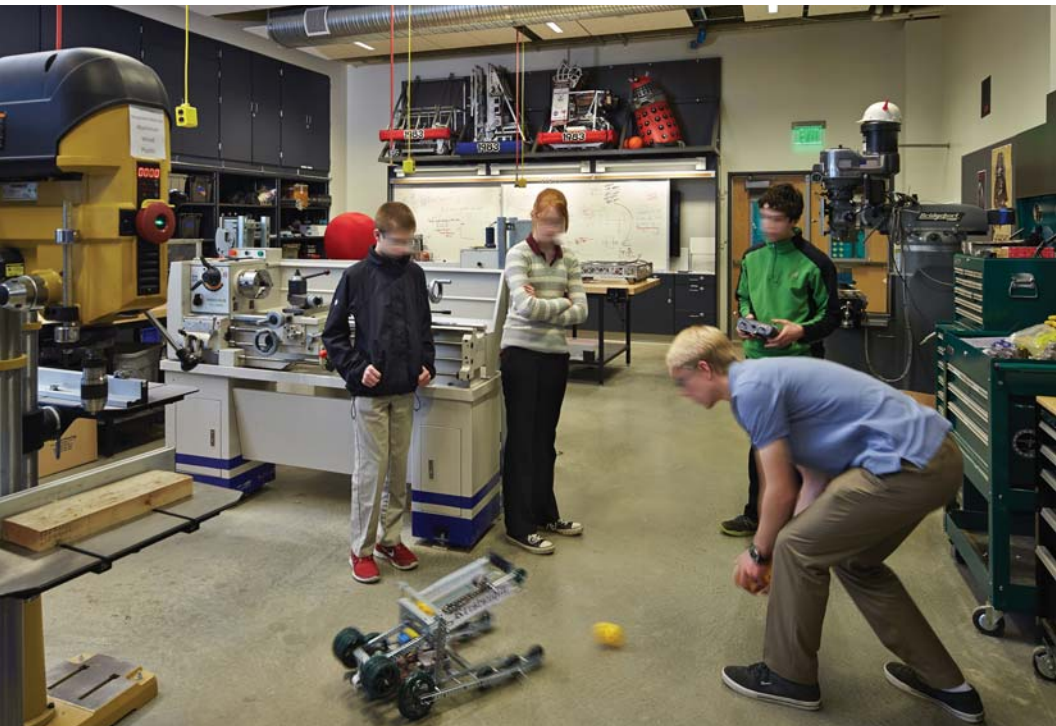




**AREA PROGRAM BALANCE**

# CAREER RELATED LEARNING / CAREER TECHNICAL EDUCATION (CTE)

▪ SCIENCE / TECHNOLOGY / ENGINEERING / MATH (STEM)	4,900 SF
▪ SOCIAL JUSTICE / WRITING & PUBLISHING / BUSINESS	4,740 SF
▪ ARTS / DESIGN CRAFT / MAKER'S SPACE	7,890 SF
▪ SOCIAL SERVICES / ADMINISTRATION	4,580 SF
	<hr/>
	22,110 SF



# SCIENCE / TECHNOLOGY / ENGINEERING / MATH (STEM)

## STEM

### PRIMARY SPACE

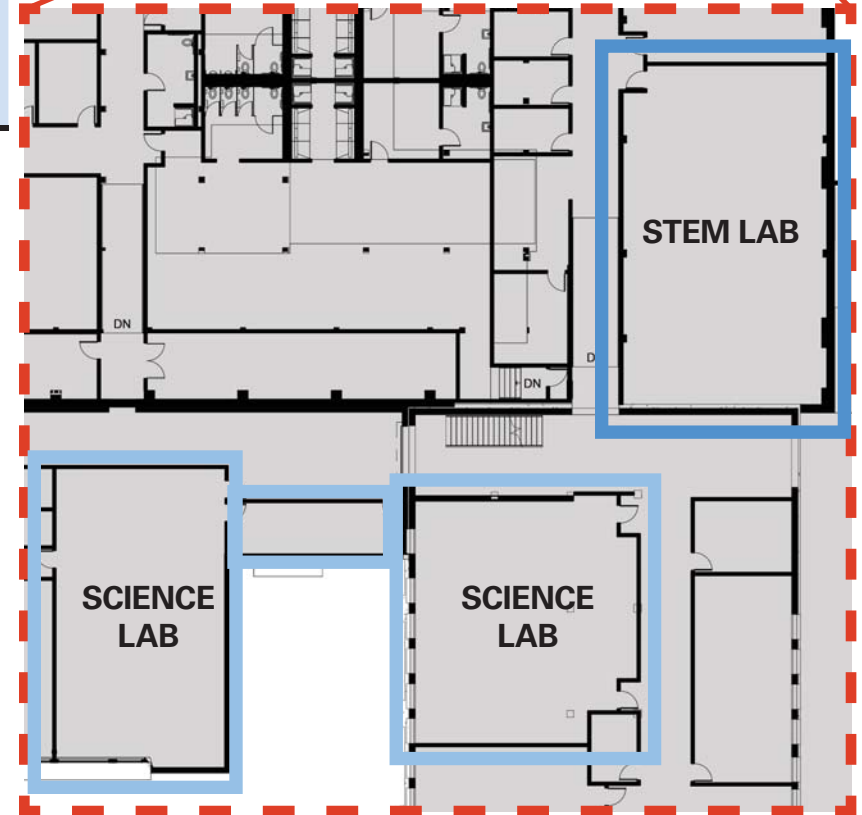
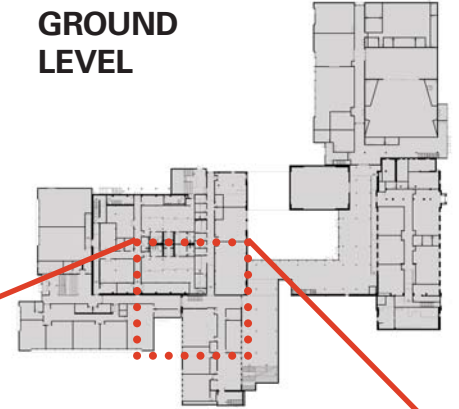
- STEM LAB 2,000 SF

### SUPPORT SPACE

- (2) SCIENCE LABS 2,900 SF

**TOTAL 4,900 SF**

GROUND  
LEVEL



CAREER RELATED LEARNING / CTE

# SOCIAL JUSTICE CENTER

## SOCIAL JUSTICE, WRITING/PUBLISHING & ENTREPRENEURSHIP

### PRIMARY SPACES

- WRITING LAB 1,100 SF
- SOCIAL JUSTICE LAB 900 SF

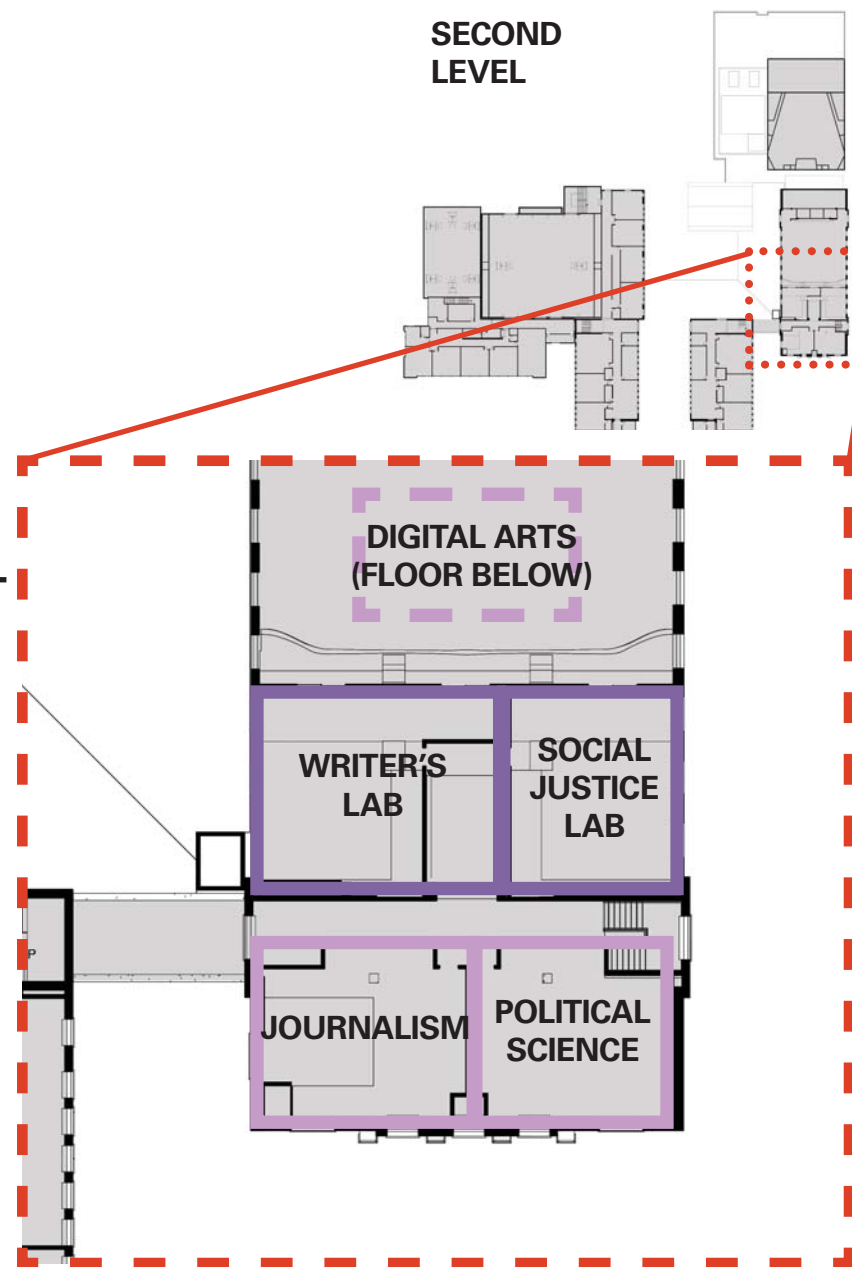
### SUPPORT SPACES

- JOURNALISM CLASSROOM 890 SF
- POLITICAL SCIENCE CLASSROOM 850 SF
- COMPUTER LAB (DIGITAL MEDIA) 1,000 SF

**TOTAL 4,740 SF**



SECOND LEVEL



## CAREER RELATED LEARNING / CTE

# ARTS, ENTERTAINMENT & RECREATION

## ARTS, DESIGN CRAFT & MAKER'S SPACE

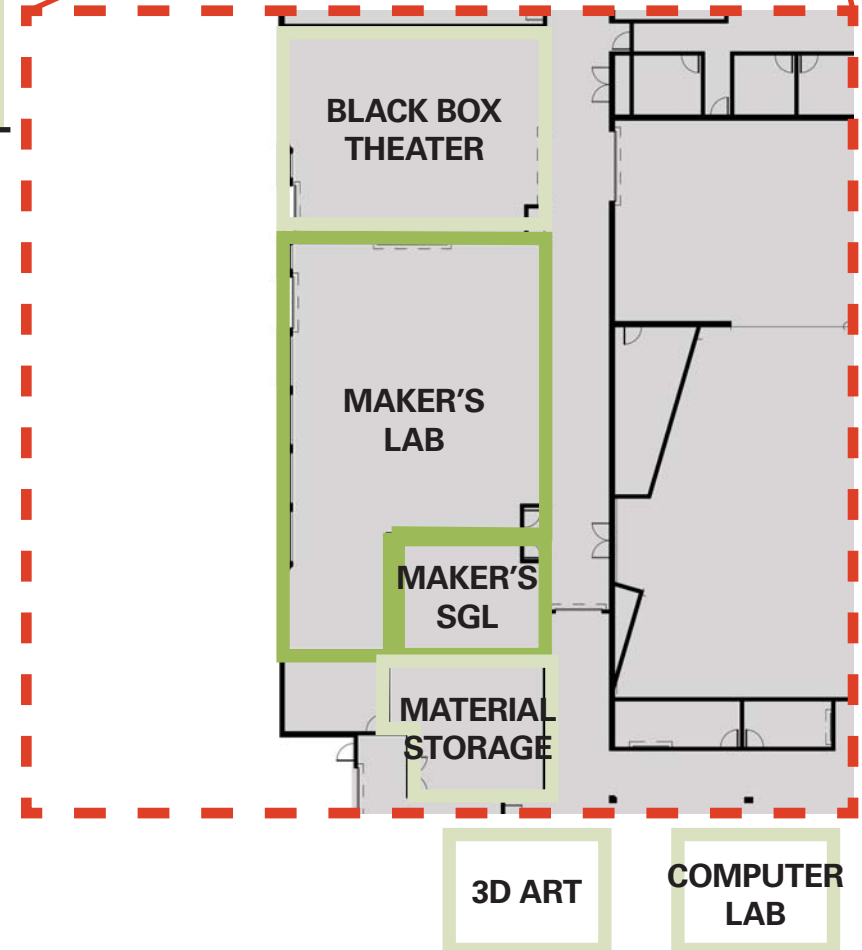
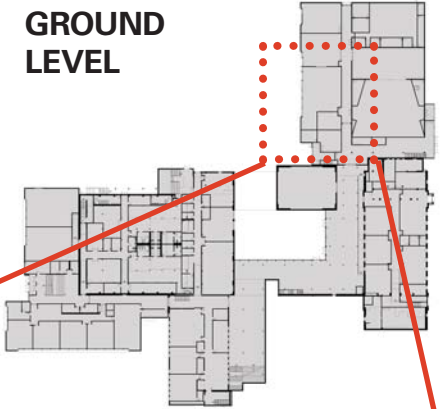
### PRIMARY SPACES

- |                                |          |
|--------------------------------|----------|
| ▪ MAKER'S LAB                  | 2,700 SF |
| ▪ MAKER'S SMALL GROUP LEARNING | 500 SF   |

### SUPPORT SPACES

- |                     |          |
|---------------------|----------|
| ▪ BLACK BOX THEATER | 1,600 SF |
| ▪ MATERIAL STORAGE  | 540 SF   |
| ▪ 3D ARTS CLASSROOM | 1,450 SF |
| ▪ COMPUTER LAB      | 1,100 SF |

**TOTAL** **7,890 SF**



**CAREER RELATED LEARNING / CTE**



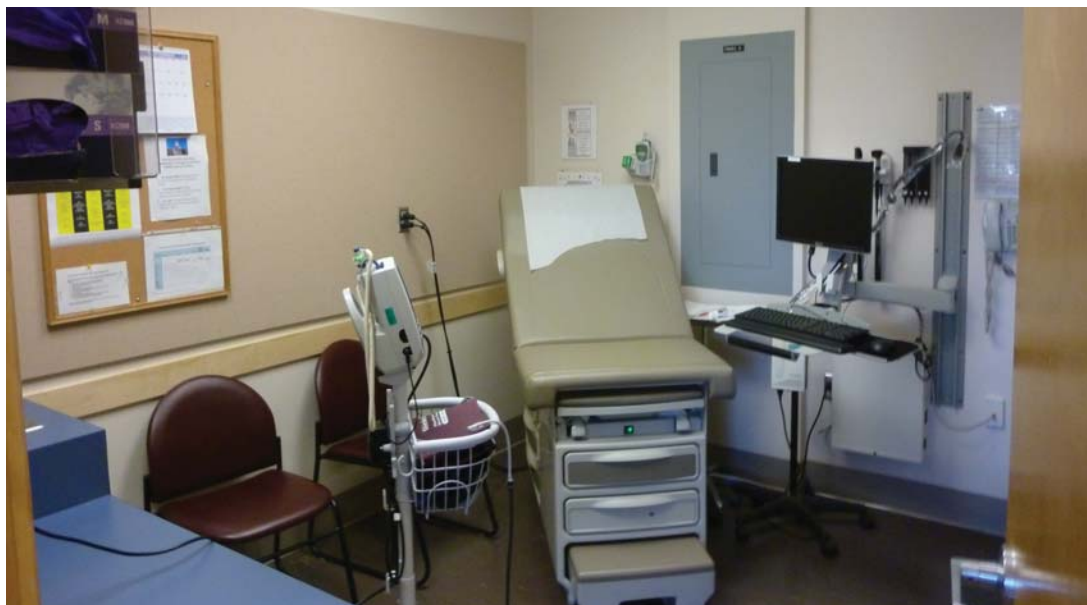
# HUMAN SERVICES

## SOCIAL SERVICES & ADMINISTRATION

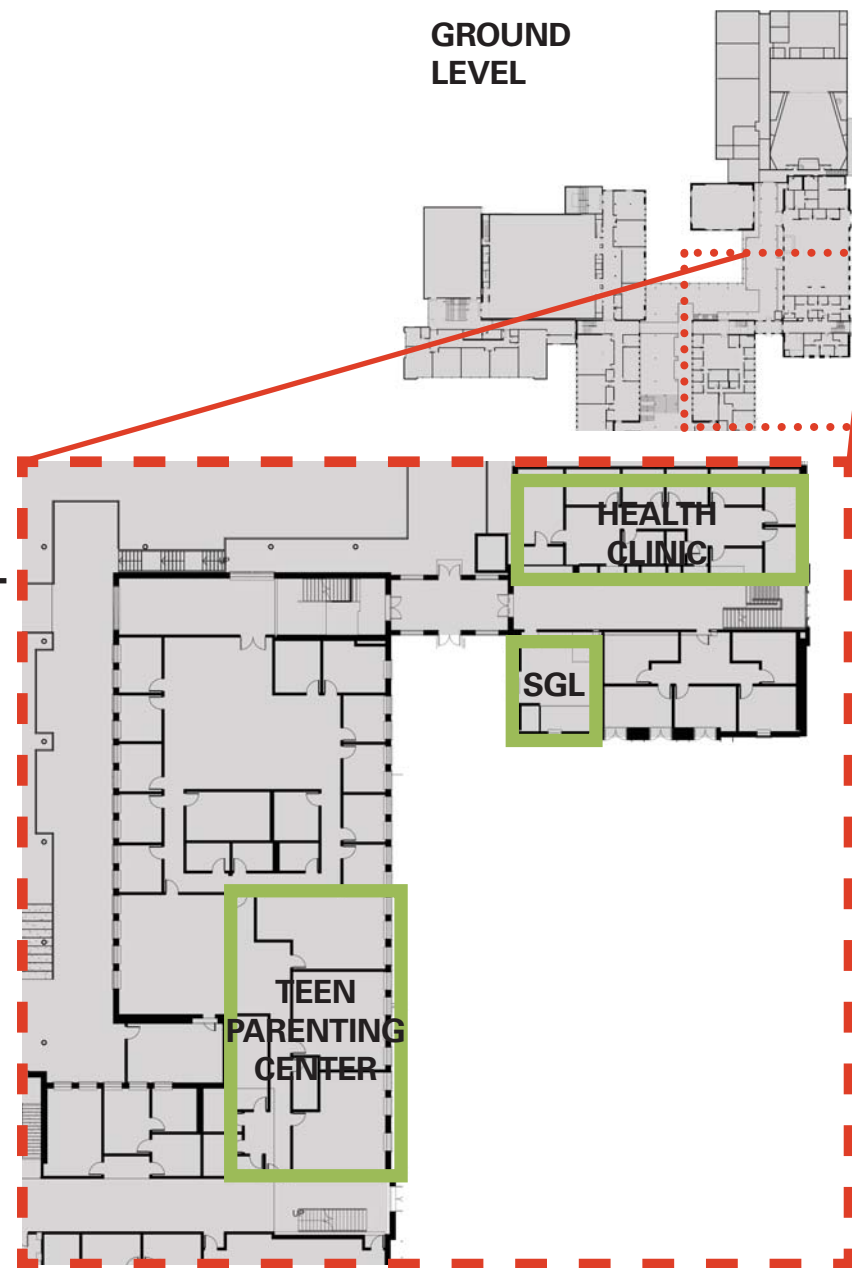
### PRIMARY SPACES

▪ TEEN PARENTING CENTER	2,700 SF
▪ HEALTH CLINIC	1,600 SF
▪ HUMAN SERVICES SMALL GROUP LEARNING	500 SF

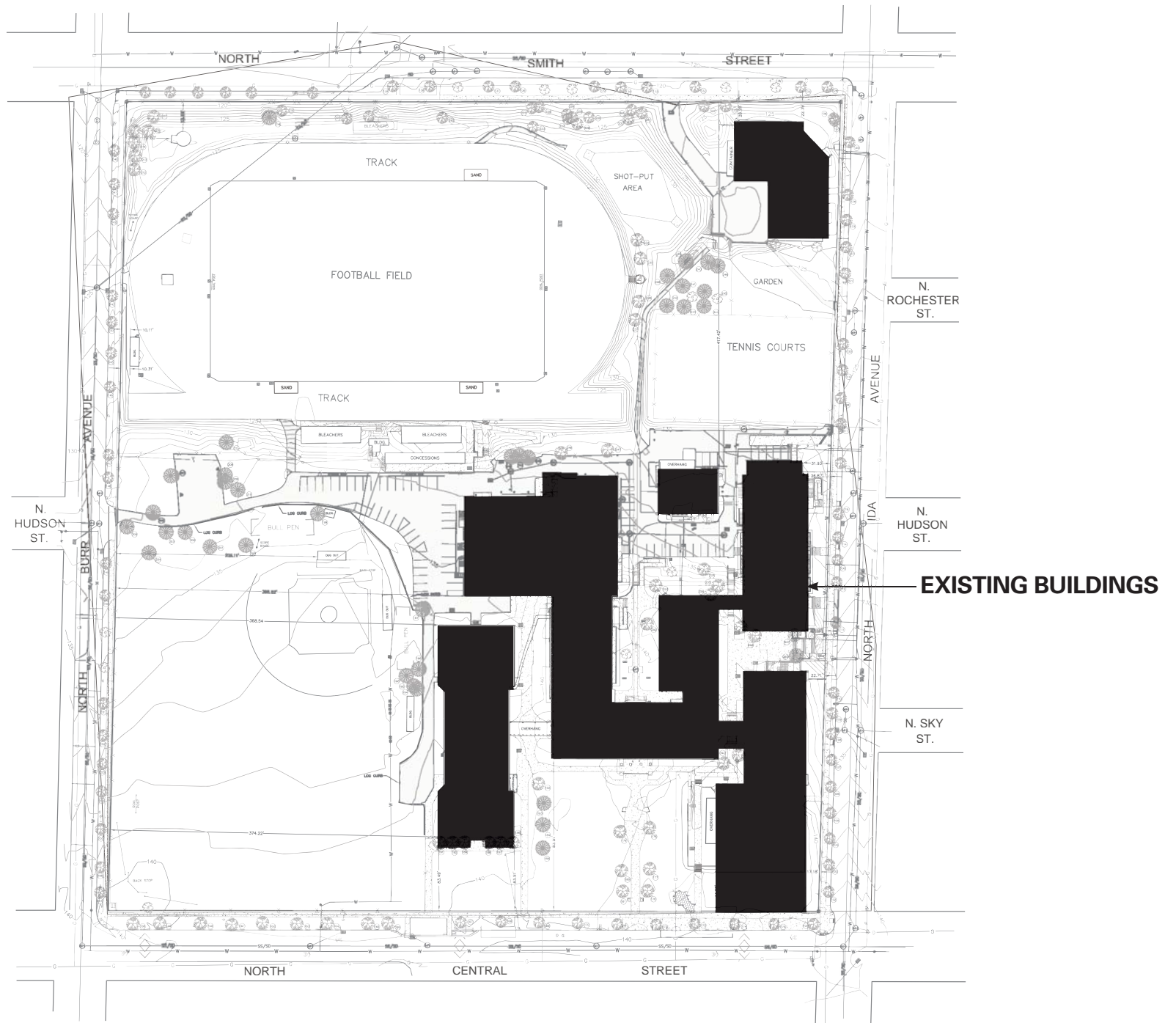
**TOTAL** 4,580 SF



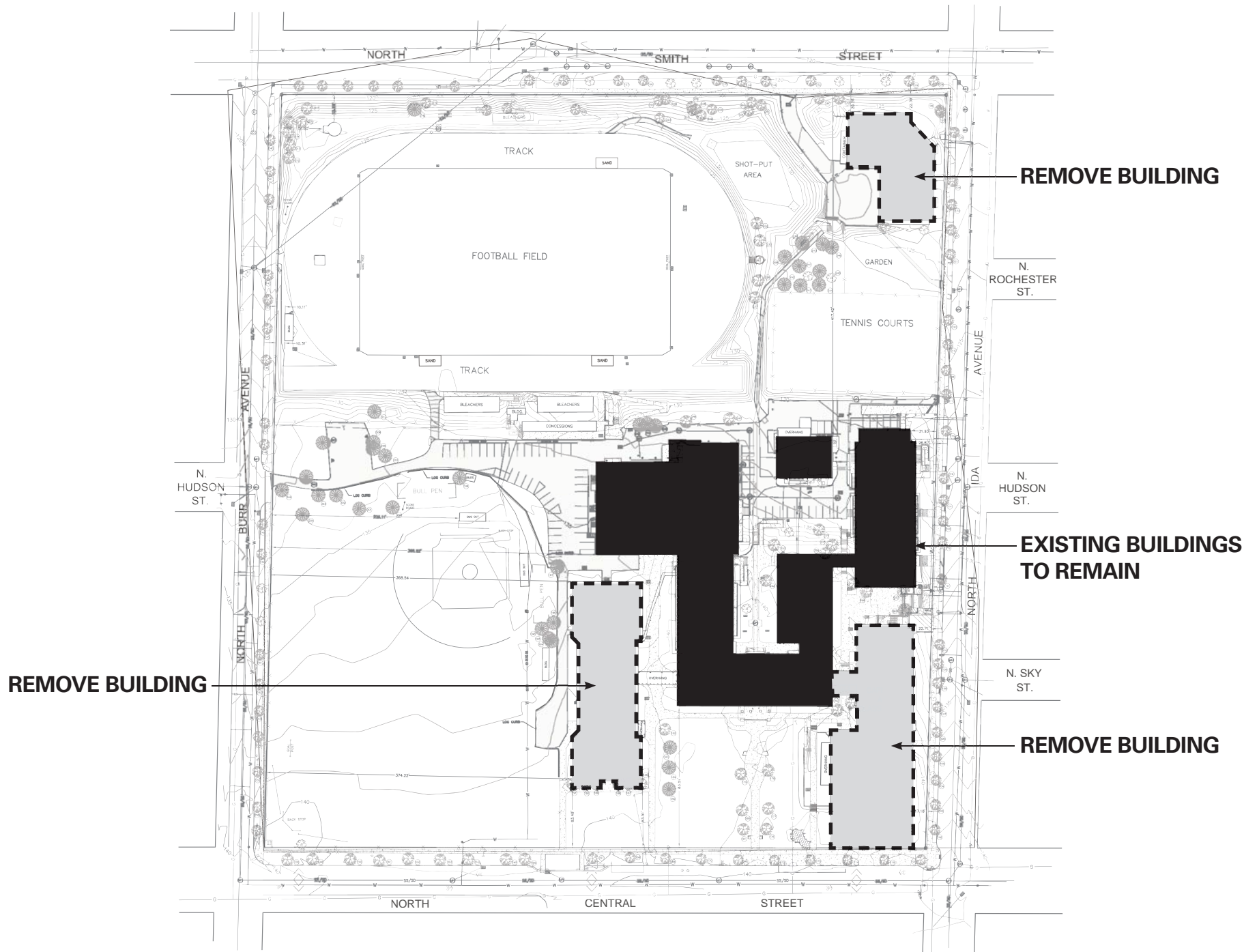
GROUND  
LEVEL



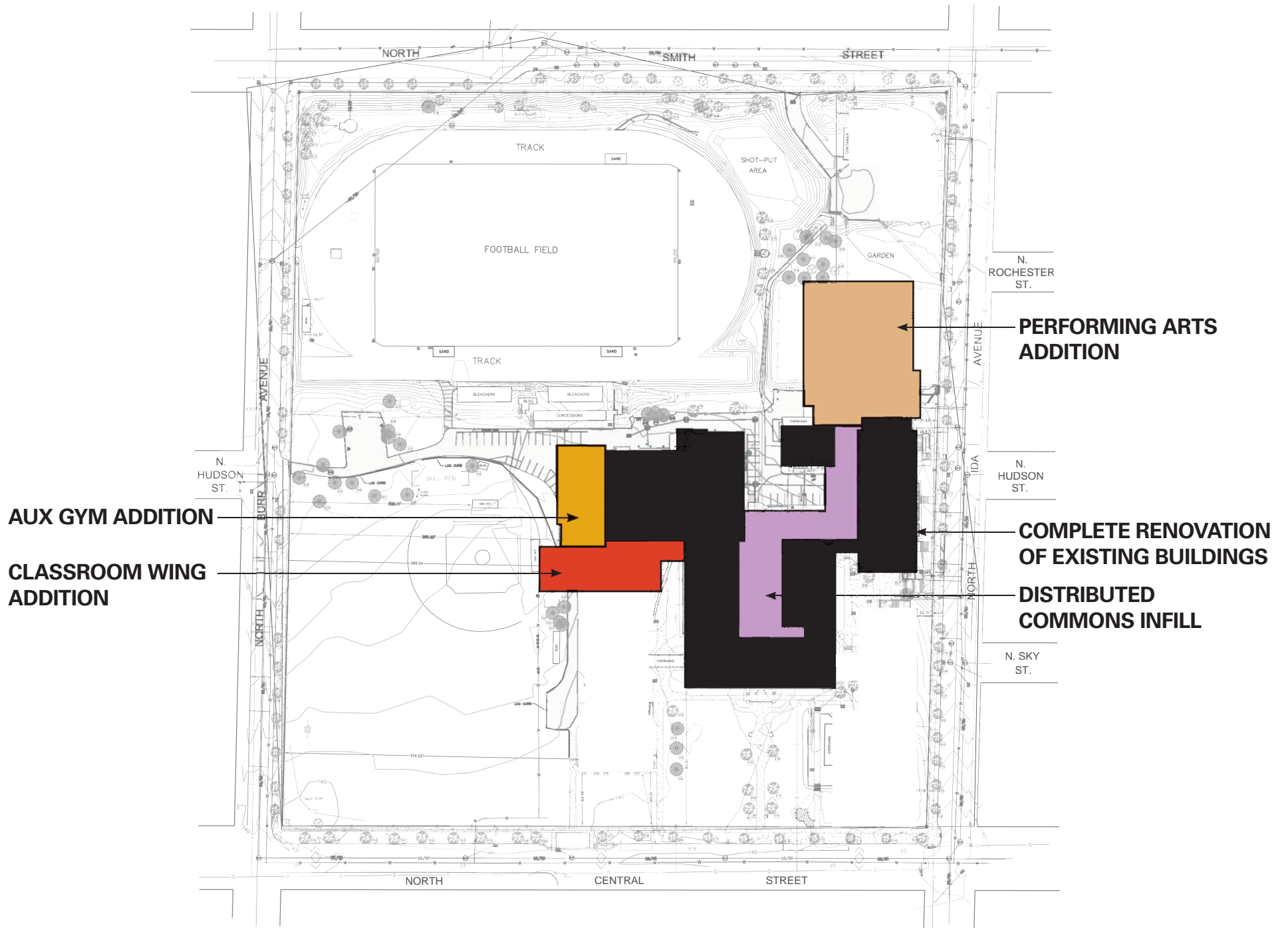
## CAREER RELATED LEARNING / CTE



# EXISTING SITE PLAN

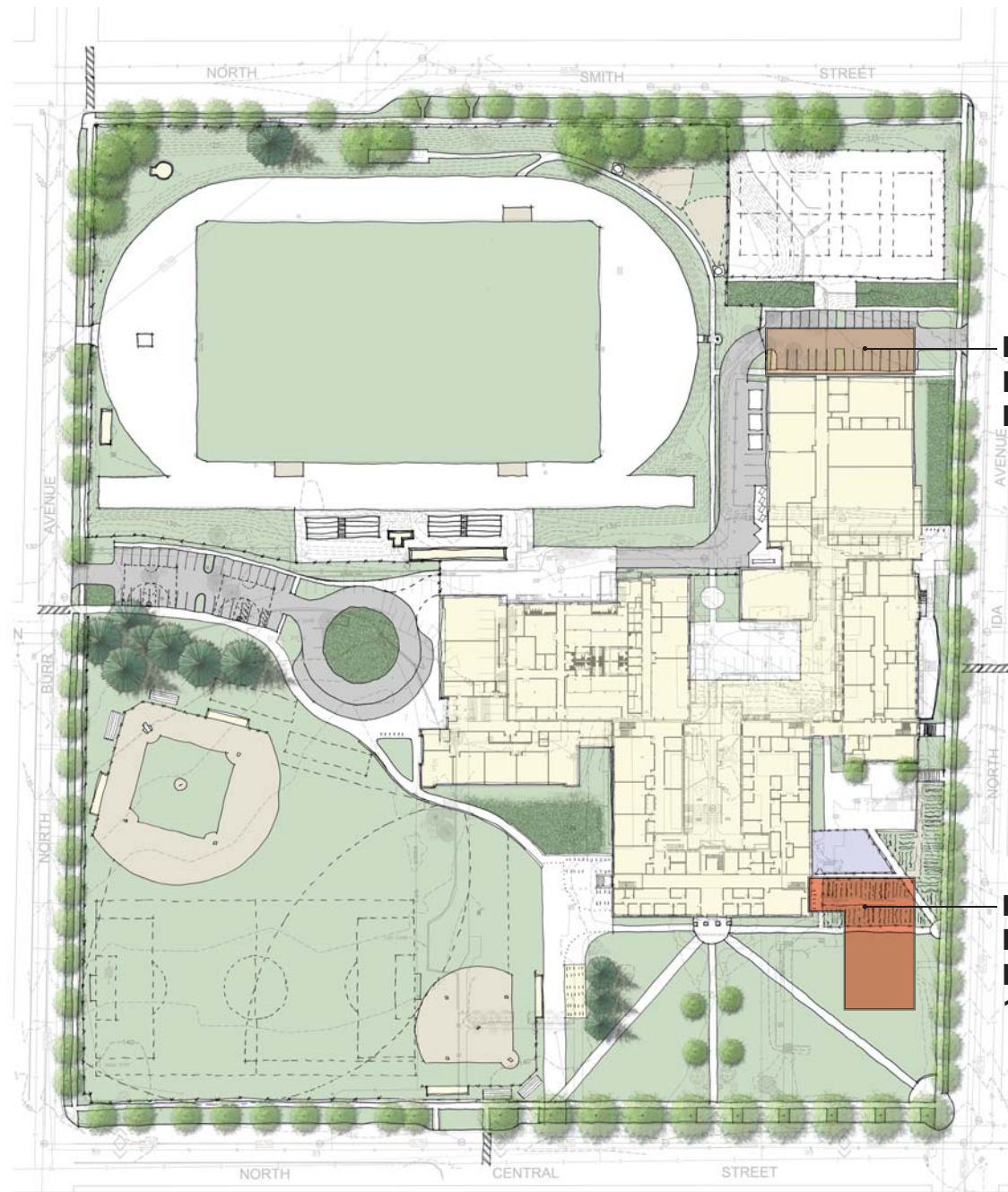


**EXISTING SITE PLAN - WITH BUILDINGS TO BE REMOVED**



# EXISTING SITE PLAN - WITH NEW ADDITIONS

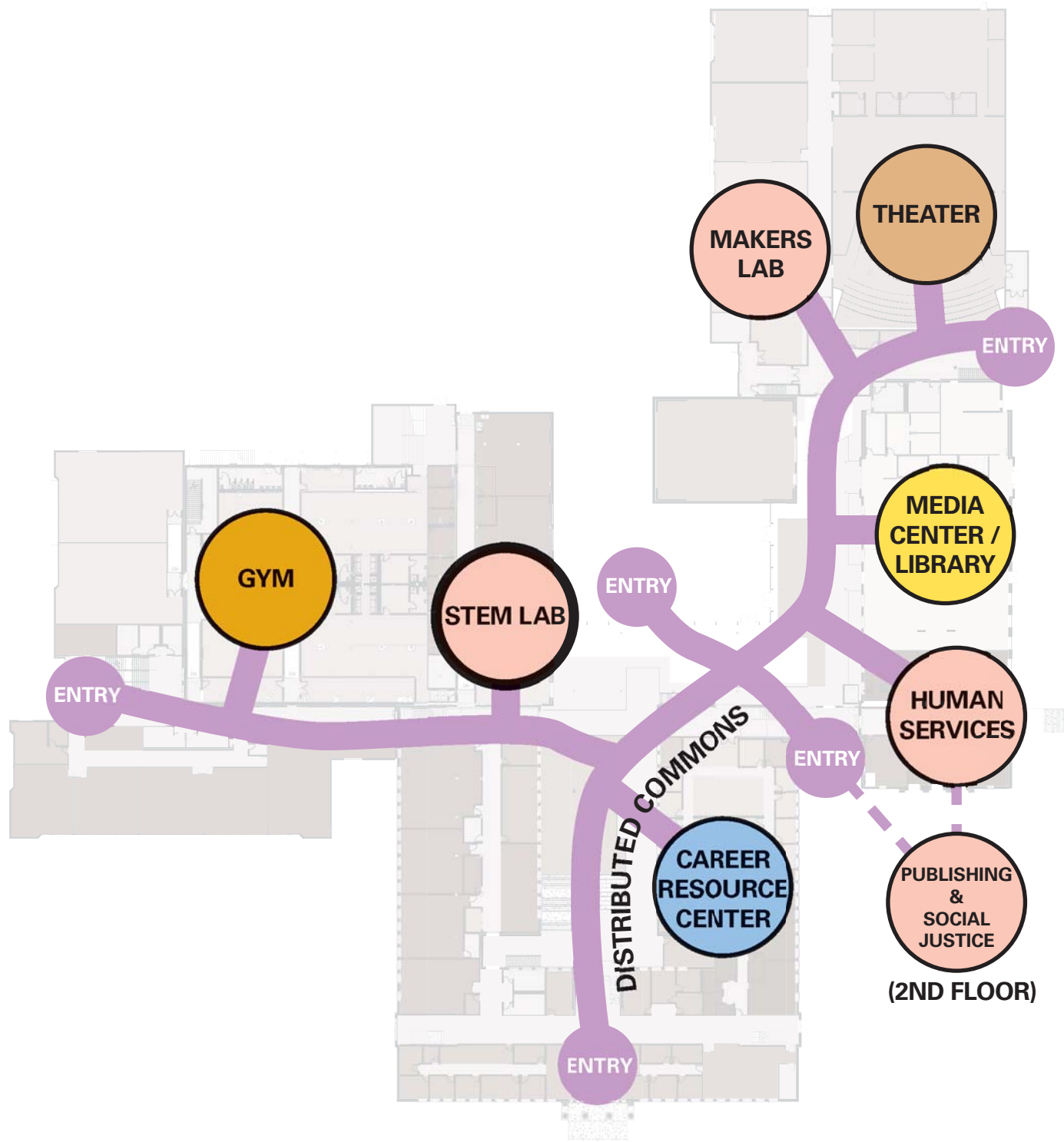




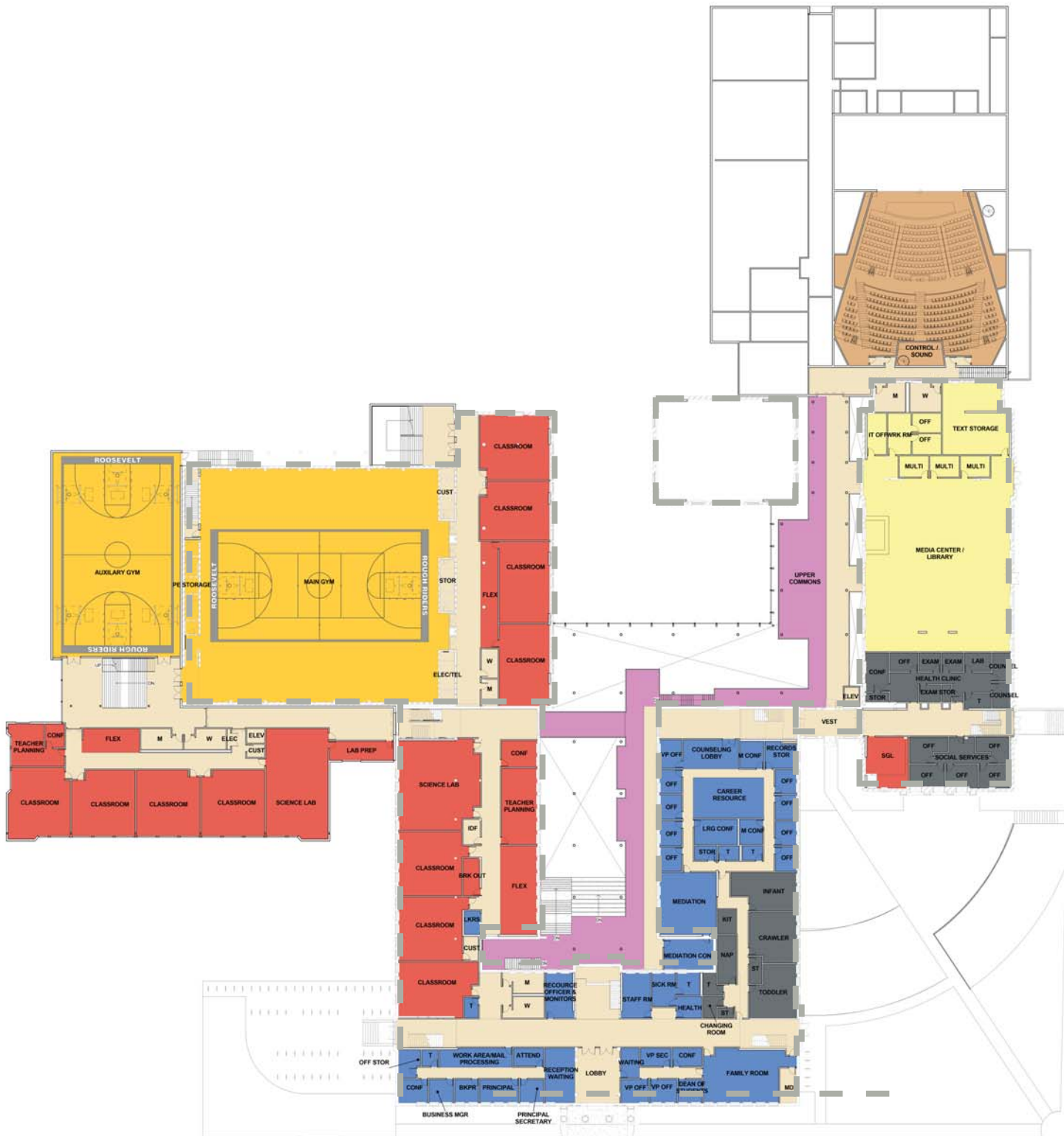
**POTENTIAL FOR EXPANSION IN THE FUTURE**

**POTENTIAL FOR FUTURE CLASSROOM EXPANSION TO 1700/1700**

# PROPOSED SITE PLAN - WITH FUTURE EXPANSIONS

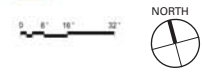


**"STRING OF PEARLS"**



**Legend**

- General Education
- Performing / Visual Arts
- Media Center / Library
- PE / Athletics
- Community / Wrap Around Services
- Commons
- Support Spaces / Circulation
- Career Related Learning/CTE
- Administration / Counseling / Student Services



**FIRST FLOOR PLAN**

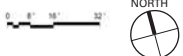




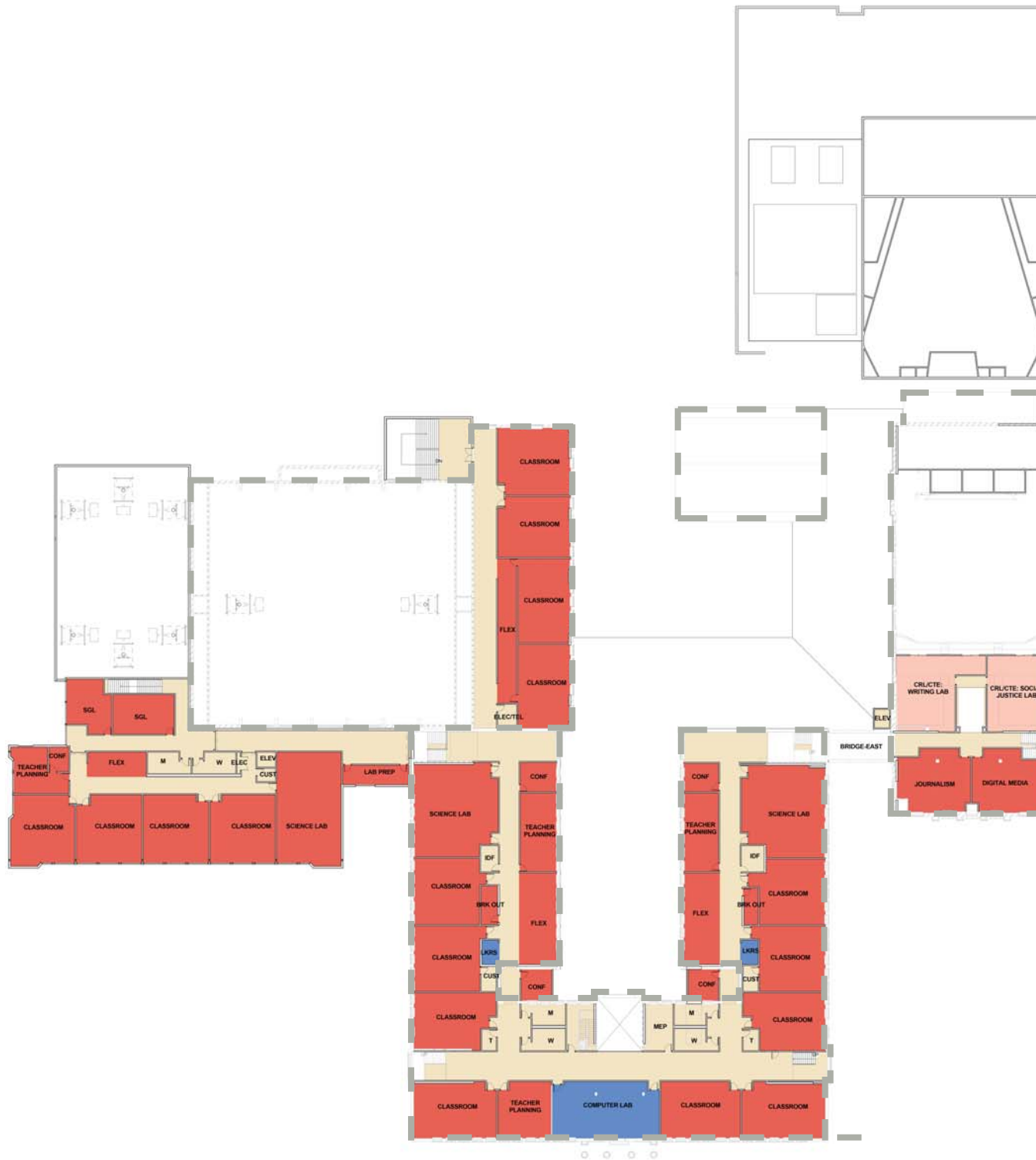
FIELD STORAGE (REMOTE)

**Legend**

- General Education
- Performing / Visual Arts
- Media Center / Library
- PE / Athletics
- Community / Wrap Around Services
- Commons
- Support Spaces / Circulation
- Career Related Learning/CTE
- Administration / Counseling / Student Services



**GROUND FLOOR PLAN**



**Legend**

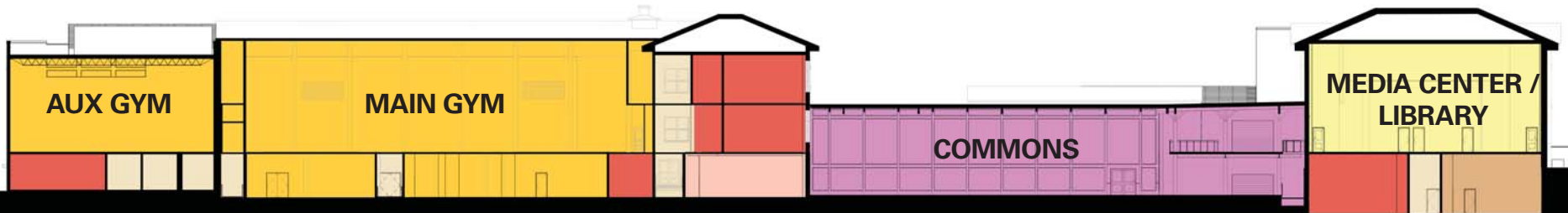
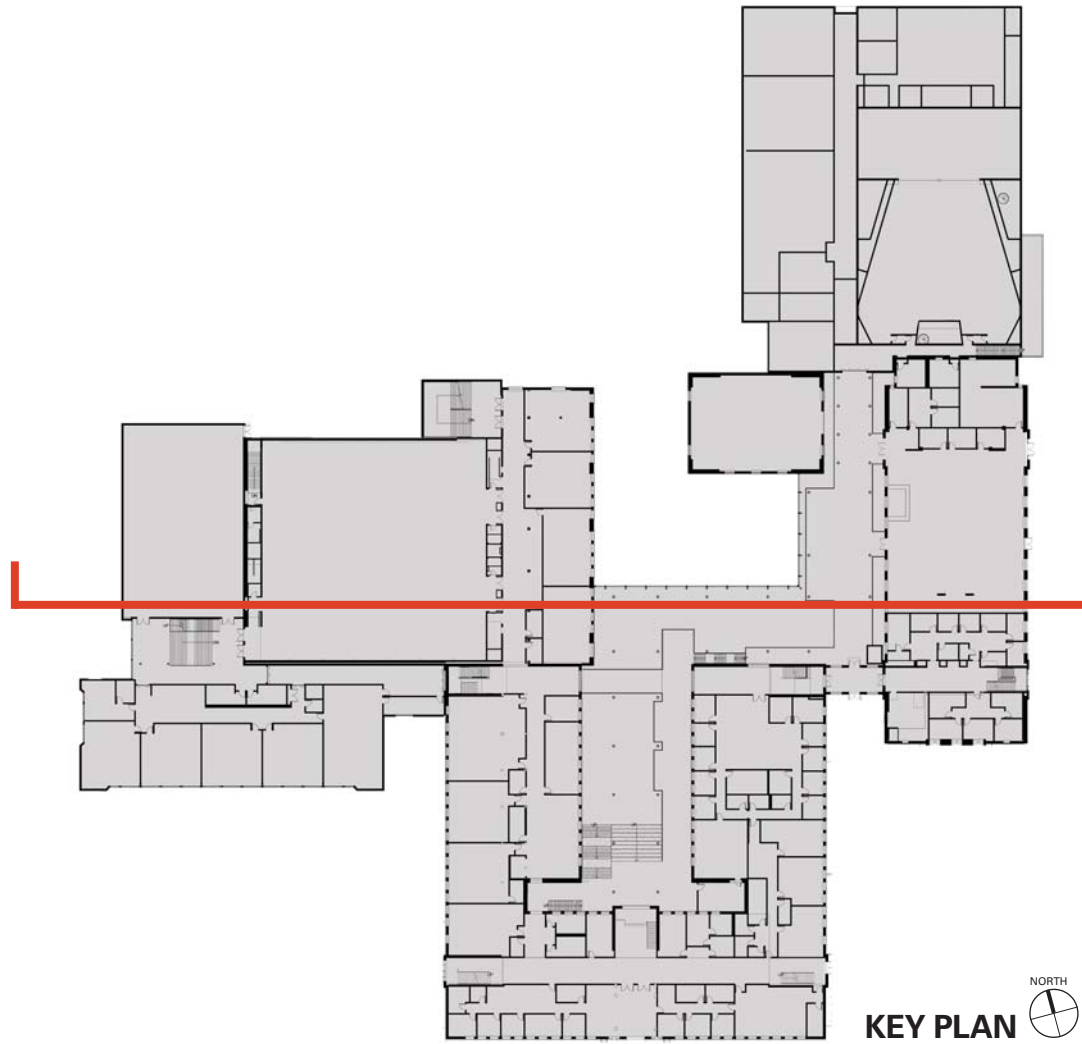
- General Education
- Performing / Visual Arts
- Media Center / Library
- PE / Athletics
- Community / Wrap Around Services
- Commons
- Support Spaces / Circulation
- Career Related Learning/CTE
- Administration / Counseling / Student Services



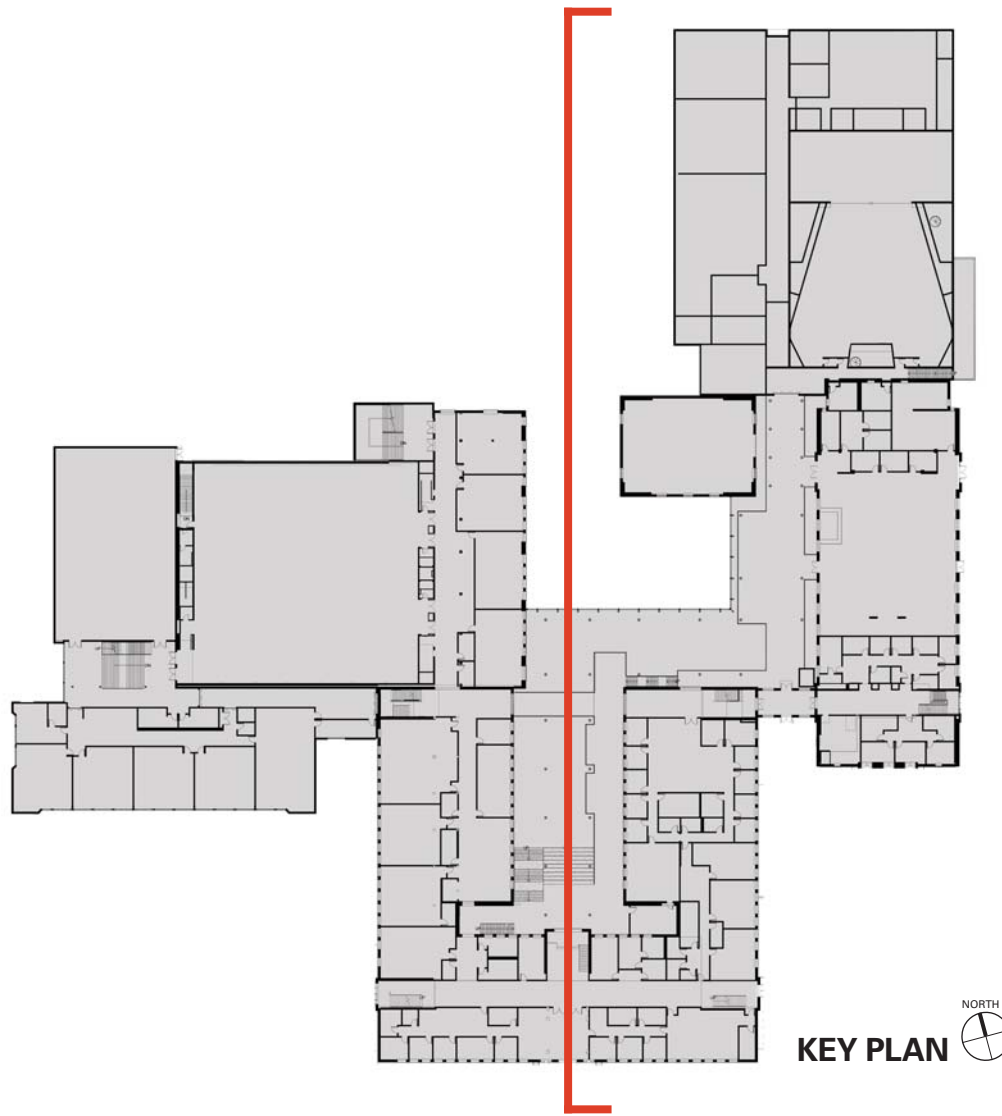
# SECOND FLOOR PLAN



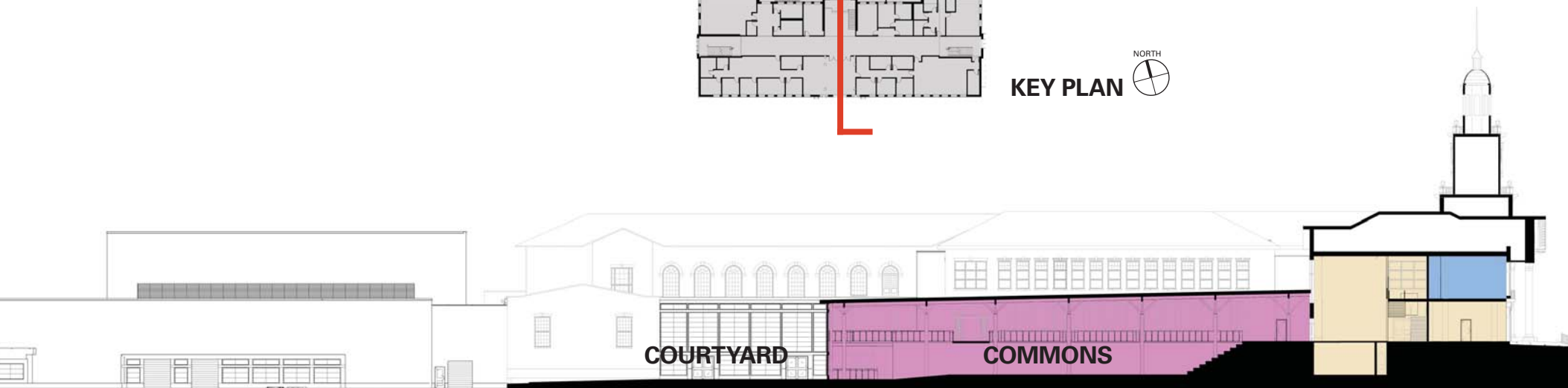
# LEARNING CLUSTER



**SECTION LOOKING NORTH**



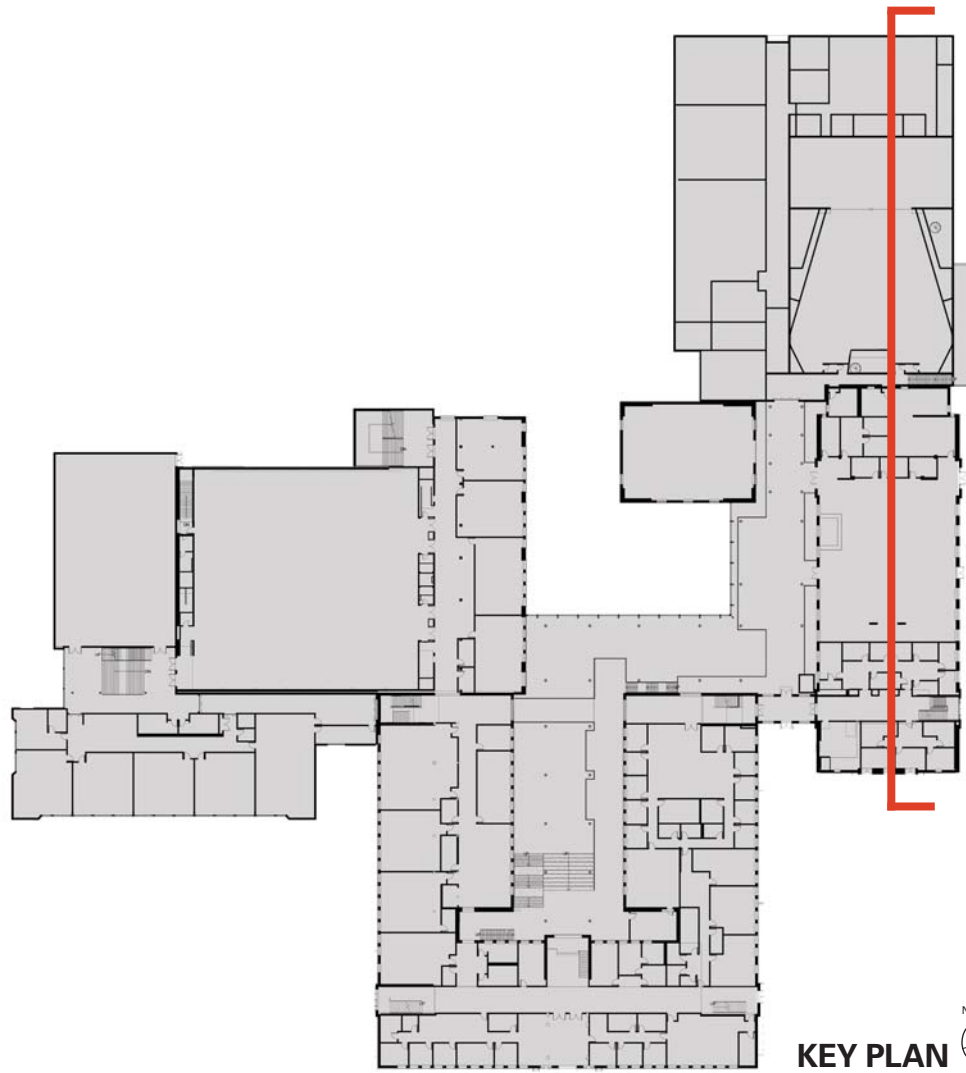
KEY PLAN 



COURTYARD

COMMONS

# SECTION LOOKING EAST



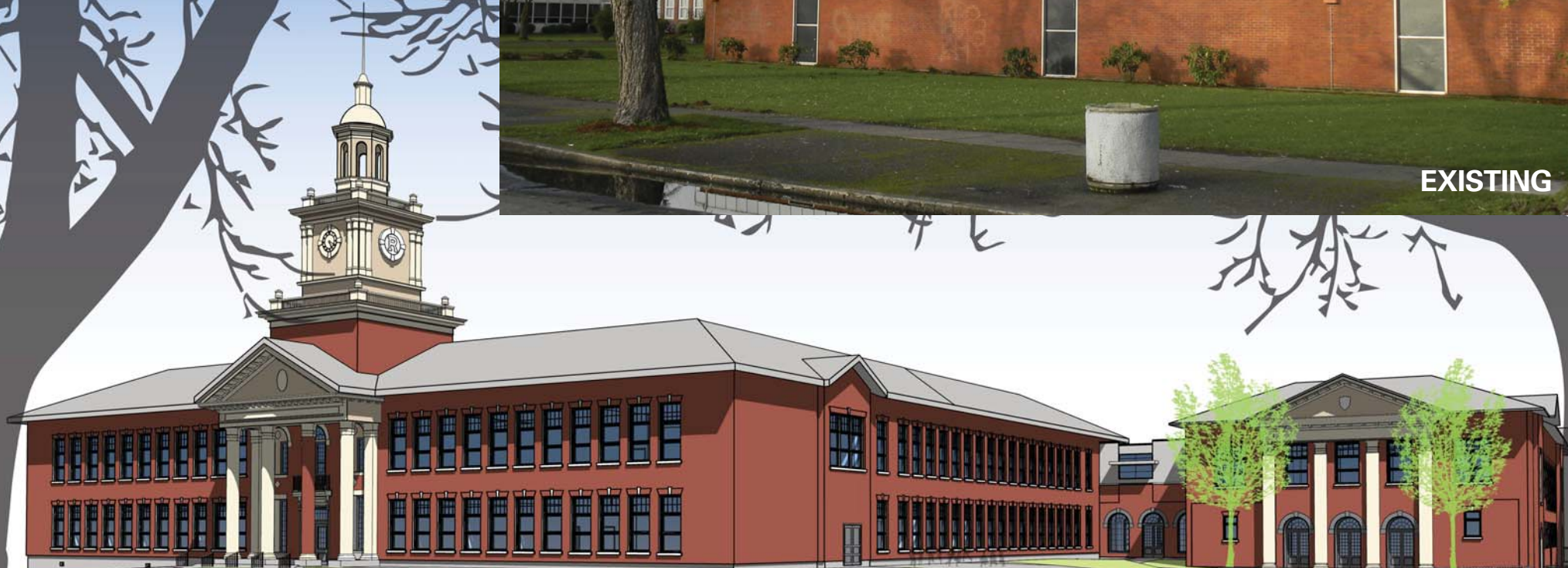
KEY PLAN 



SECTION LOOKING EAST

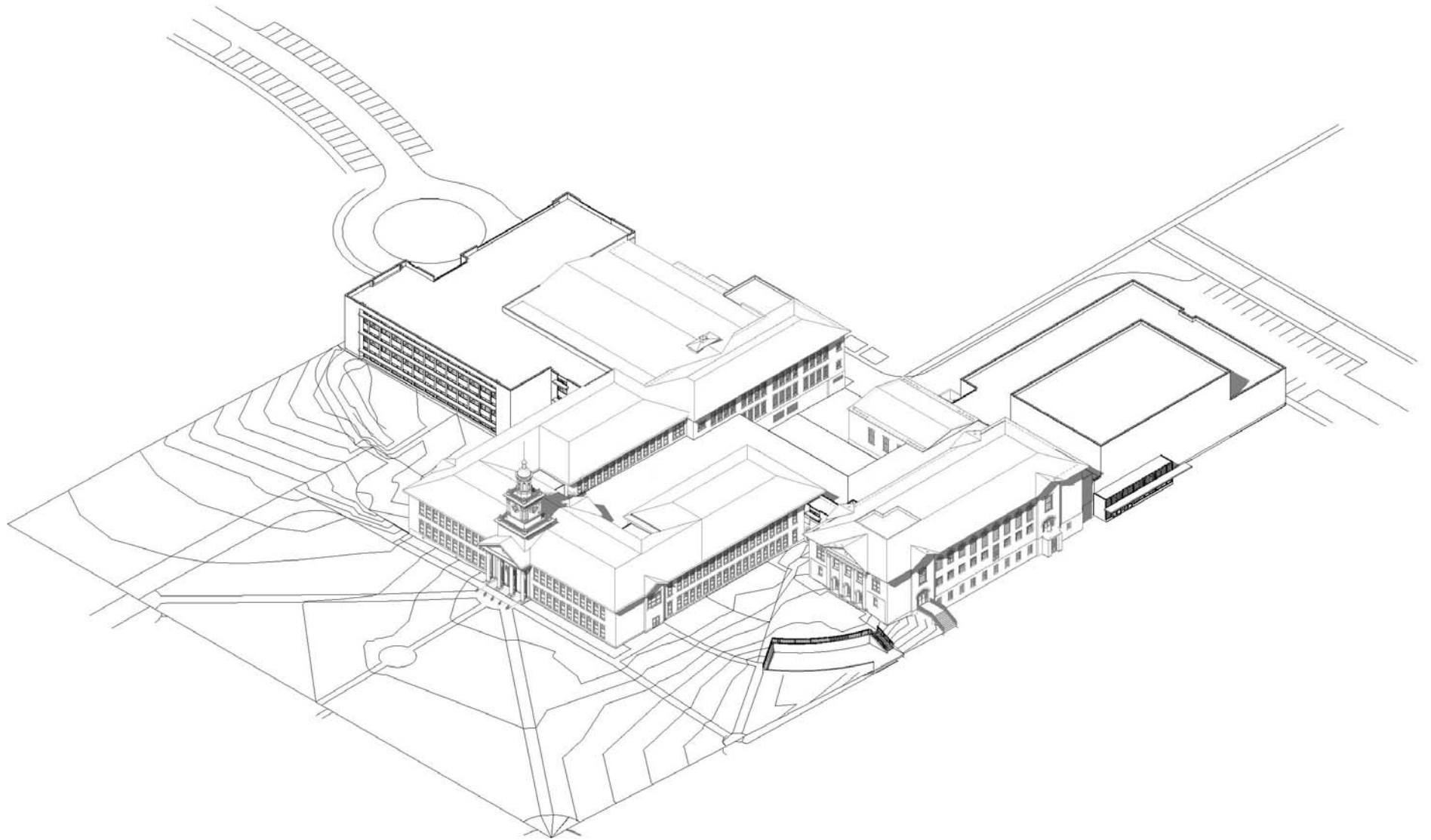


EXISTING



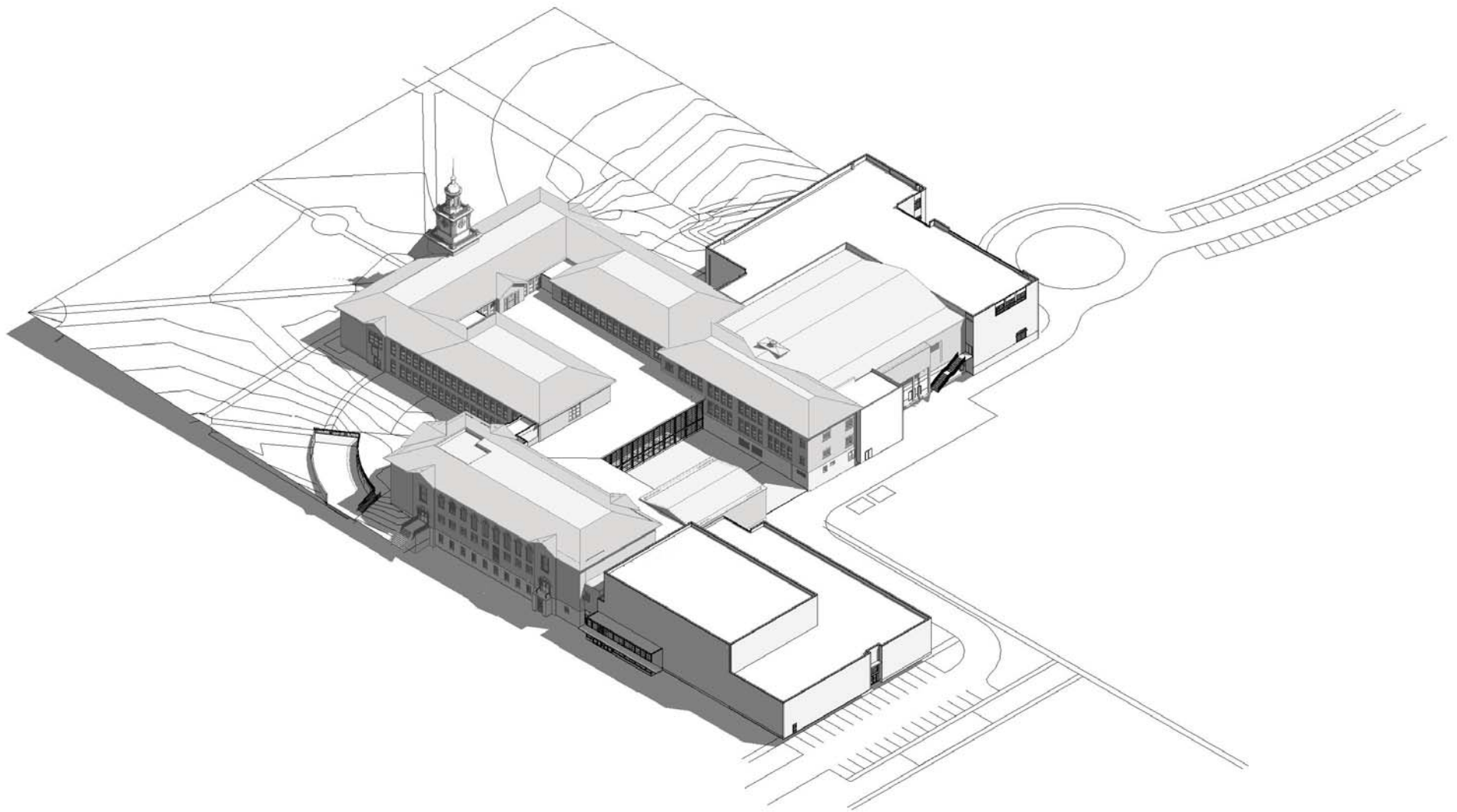
DESIGN INTENT - HISTORIC CONTEXT

PROPOSED

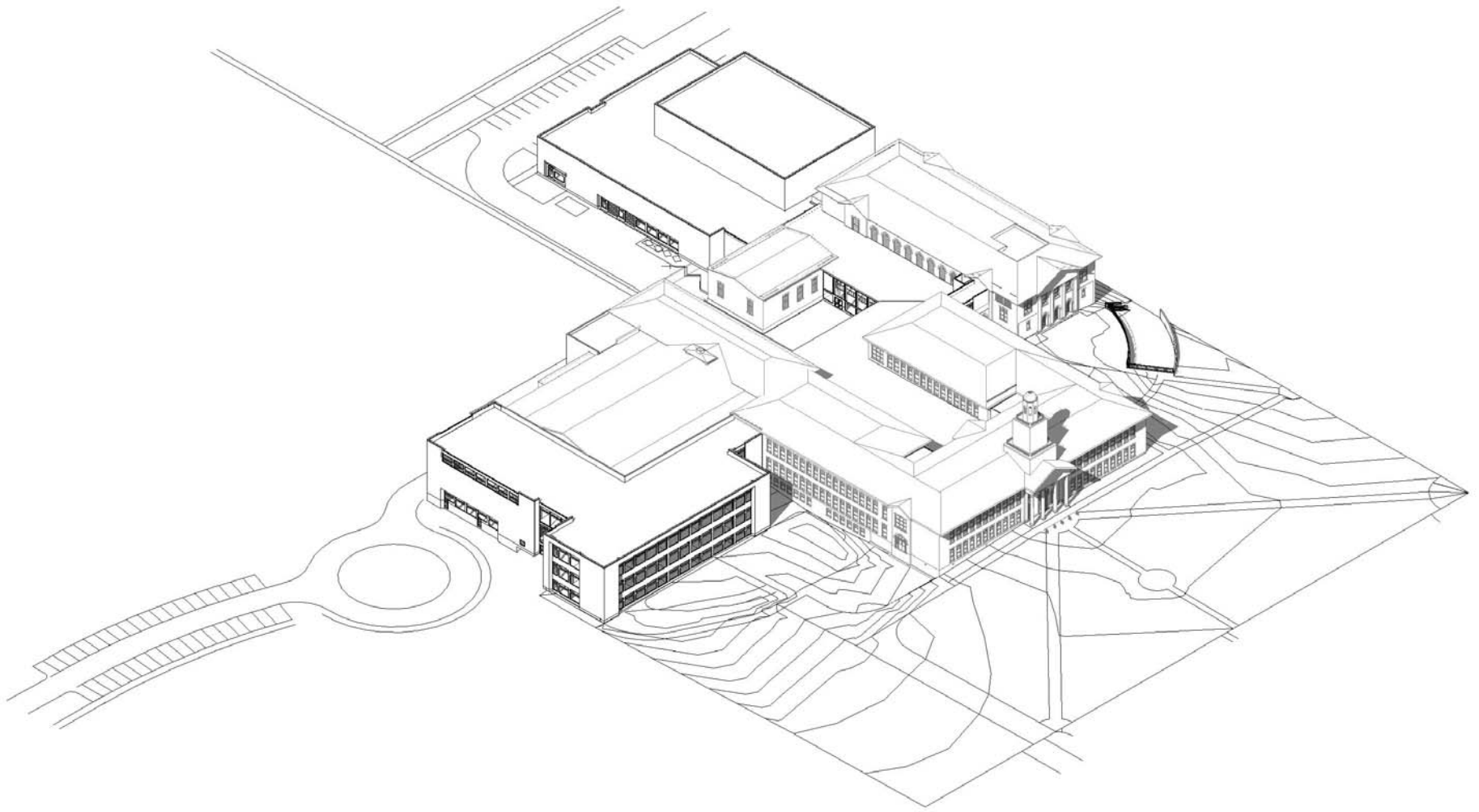


# DESIGN MASSING STUDY - SE CORNER





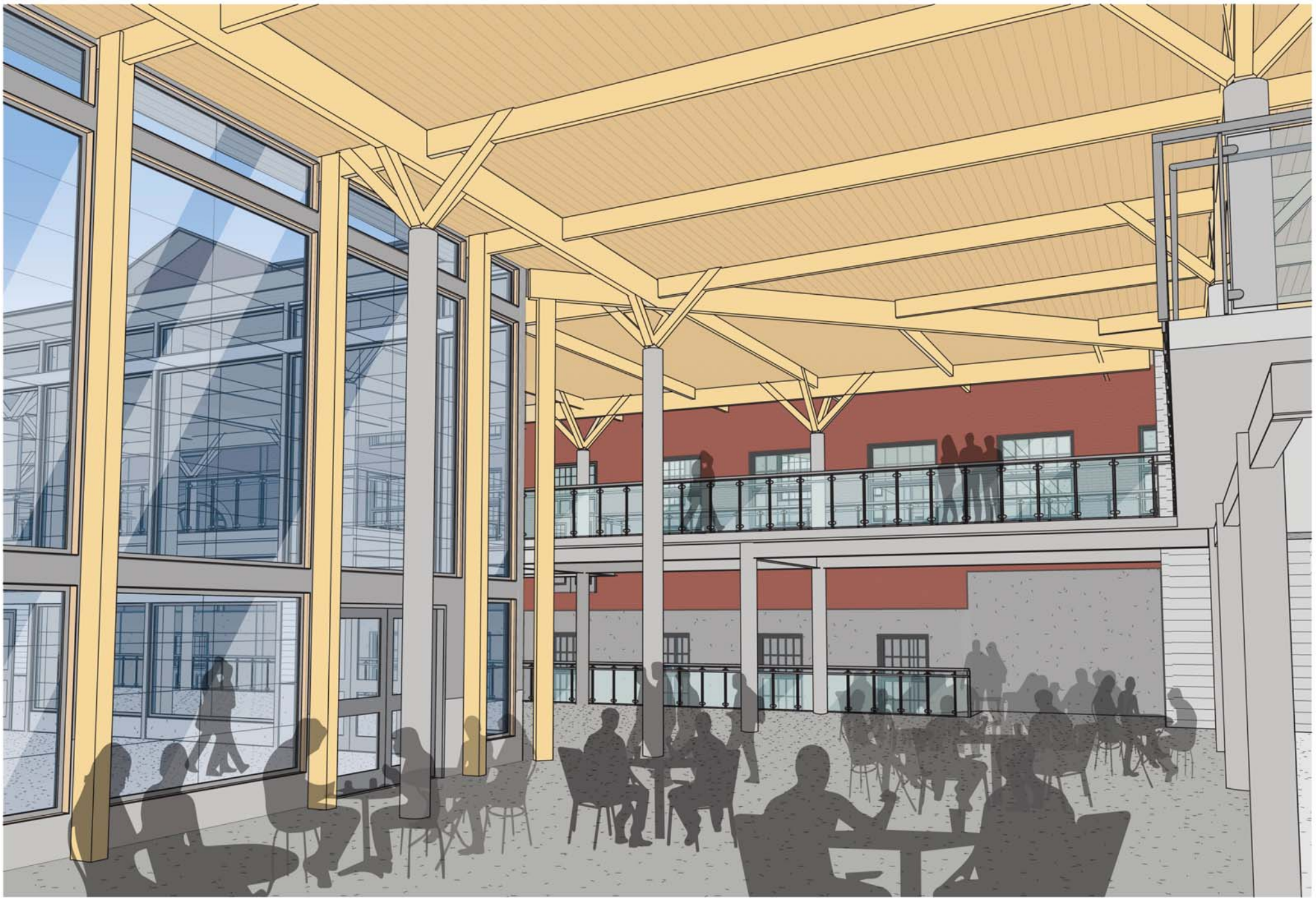
**DESIGN MASSING STUDY - NE CORNER**



# DESIGN MASSING STUDY - SW CORNER



# COMMONS COURTYARD STUDY



# COMMONS INTERIOR STUDY

# WHAT WE HAVE LEARNED TO DATE

- Seismic upgrades to meet code are required throughout
- All spaces of the building and site need to be accessible to all
- Interior circulation needs to be improved
- Security needs to be improved by limiting number of entrances/exits and allow students to get to class without going outside
- Natural light and ventilation are important to design
- Environments need to be welcoming and calm
- Provide better access to services like restrooms and water fountains
- Bathrooms should be clean and accessible
- Staff and community are divided on desires for vehicular parking vs. open space and other site program needs
- Career Related Learning Programs have been identified based on RHS community desires
- There are competing desires for space within the building including:
  - Athletics
  - Fine and Performing Arts
  - Career Related Learning and CTE programs
  - 21st Century learning spaces
  - Classroom Spaces
  - Community Services
- Historic Memorials and Memorabilia need to be incorporated into new program
- Heritage memorabilia should be distributed throughout the school or at least made more visible to more students
- Treasured parts of the school (like the murals) need to be retained
- Existing Neighborhood Garden needs to be retained
- Community would like to have access to the following areas after school hours:
  - Health Clinic and Teen Parenting
  - Athletic facilities including weight room and aerobics studio
  - Makers Space
  - Theater
- 21st Century learning is desired by all, but there are those who wish to balance this with traditional classroom designs and teacher/classroom relationships. We recognize the need for a balance and will continue to pursue this as the design develops.